

TECHNICAL MANUAL

ORGANIZATIONAL, DIRECT SUPPORT, AND GENERAL SUPPORT MAINTENANCE

REPAIR PARTS AND SPECIAL TOOLS LISTS

(INCLUDING DEPOT MAINTENANCE REPAIR PARTS AND SPECIAL TOOLS)

FOR

PANELS, PATCHING COMMUNICATION

SB-675/MSC (NSN 5895-00-021-2091) AND

SB-675A/MSC (NSN 5895-00-878-2706)

**ORGANIZATIONAL, DIRECT SUPPORT, AND GENERAL SUPPORT MAINTENANCE
 REPAIR PARTS AND SPECIAL TOOLS LISTS
 (INCLUDING DEPOT MAINTENANCE REPAIR PARTS AND SPECIAL TOOLS)**

FOR

**PANELS, PATCHING COMMUNICATION
 SB675/MSC (NSN 5895-00-021-2091) and
 SB675A/MSC (NSN 5895-00-878-2706)**

Current as of 24 January 1977

REPORTING OF ERRORS

You can improve this manual by recommending improvements using DA Form 2028-2 (Test) located in the back of the manual. Simply tear out the self-addressed form, fill it out as shown on the sample, fold it where shown, and drop it in the mail.

If there are no blank DA Forms 20282 (Test) in the back of your manual, use the standard DA Form 2028 (Recommended Changes to Publications and Blank Forms) and forward to the Commander US Army Electronics Command, ATTN: DRSELMA-Q, Fort Monmouth, New Jersey 07703.

In either case, a reply will be furnished direct to you.

SECTION		Page	Illus. Figure
	I. INTRODUCTION	1	
	II. REPAIR PARTS LIST	9	
GROUP	00 Panels, Patching Communication SB-675/MSC and SB-675A/MSC...	9	1-17
	01 Distribution Box J-1077A/U (See TM 11-6110-201-15P for parts)		
	02 Distribution Box J-2317/U (See TM 11-6110-243-15P for parts)		
	03 Intercommunications Station LS-147C/FI (See TM 11-5830-221-24P for parts)		
	04 Switchboard Telephone, Manual SB-22/PT or SB-22A/PT (See TM 11-5805-262-20P and TM 11-5805-26235P for parts)		
	05 Telephone Set TA-312/PT (See TM 11-5805-201-12 and TM 11-5805-201-35 for parts)		
	06 Teletypewriter TT-98/FG (No parts authorized) or TT-4A/TG (See TM 11-5815-206-20P, TM 11-5815-206-35P/1, and TM 11-5815-20635P/2 for parts)		
	07 Terminal Telegraph TH-5/TG (See TM 11-5805-246-20P and TM 11-5805-246-34P for parts) or TH-22/TG (See TM 11-5805-35e12 and TM 11-5805-356-34P-1 for parts)		
	08 Test Set TS-140/PCM (No parts authorized)		
	09 Shelter, Electrical Equipment S-189()/MSC or S-404/MSC (See Group 00 for parts)		
SECTION	III. SPECIAL TOOLS LIST (NOT APPLICABLE)		
	IV. NATIONAL STOCK NUMBER AND PART NUMBER INDEX	41	

***This manual supersedes so much of TM 11-5895-225-15, 14 October 1965, including Change 1, 26 September 1967 and Change 2, 15 June 1970, and TM 11-5895-225-15-1, 15 August 1970, as pertains to repair parts and special tools lists.**

SECTION I INTRODUCTION

1. Scope

This lists spares and repair parts; special tools; special test, measurement, and diagnostic equipment (TMDE), and other special support equipment required for performance of organizational, direct support, and general support maintenance of the SB-675/MSC and SB - 75A/MSC. It authorizes the requisitioning and issue of spares and repair parts as indicated by the source and maintenance codes.

2. General

This Repair Parts and Special Tools List is divided into the following sections:

a. *Section II. Repair Parts List.* A list of spares and repair parts authorized for use in the performance of maintenance. The list also includes parts which must be removed for replacement of the authorized parts. Parts lists are composed of functional groups in numeric sequence, with the parts in each group listed in figure and item number sequence.

b. *Section III. Special Tools List.* Not applicable.

c. *Section IV. National Stock Number and Part Number Index.* A list, in National item identification number (NIIN) sequence, of all National stock numbers (NSN) appearing in the listings, followed by a list, in alphameric sequence, of all part numbers appearing in the listings. National stock numbers and part numbers are cross-referenced to each illustration figure and item number appearance.

3. Explanation of Columns

a. *Illustration.* This column is divided as follows:

(1) *Figure number.* Indicates the figure number of the illustration on which the item is shown.

(2) *Item number.* The number used to identify item called out in the illustration.

b. *Source, Maintenance, and Recoverability (SMR) Codes.*

(1) *Source code.* Source codes indicate the manner of acquiring support items for maintenance, repair, or overhaul of end items. Source codes are entered in the first and second positions of the Uniform SMR Code format as follows:

Code

Definition

PA - Item procured and stocked for anticipated or known usage.

XD - A support item that is not stocked. When required, item will be procured through normal supply channels.

NOTE

Cannibalization or salvage may be used as a source of supply for any items source coded above except those coded XA and aircraft support items as restricted by AR 700 - 42.

(2) *Maintenance code.* Maintenance codes are assigned to indicate the levels of maintenance authorized to USE and REPAIR support items. The maintenance codes are entered in the third and fourth positions of the Uniform SMR Code format as follows:

(a) The maintenance code entered in the third position will indicate the lowest maintenance level authorized to remove, replace, and use the support item. The maintenance code entered in the third position will indicate one of the following levels of maintenance:

<i>Code</i>	<i>Application/Explanation</i>
O	Support item is removed, replaced, used at the organizational level.
F	Support item is removed, replaced, used at the direct support level.
H	Support item is removed, replaced, used at the general support level.

(b) The maintenance code entered in the fourth position indicates whether the item is to be repaired and identifies the lowest maintenance level with the capability to perform complete repair (i.e., all authorized maintenance functions). This position will contain one of the following maintenance codes:

<i>Code</i>	<i>Application/Explanation</i>
Z	Nonreparable. No repair is authorized.

(3) *Recoverability code.* Recoverability codes are assigned to support items to indicate the disposition action on unserviceable items. The recoverability code is entered in the fifth position of the Uniform SMR Code format as follows:

<i>Recoverability codes</i>	<i>Definition</i>
Z	Nonreparable item. When unserviceable, condemn and dispose at the level indicated in position 3.

c. *National Stock Number.* Indicates the National stock number assigned to the item and will be used for requisitioning purposes.

d. *Part Number.* Indicates the primary number used by the manufacturer (individual, company, firm, corporation, or Government activity), which controls the design and characteristics of the item by means of its engineering drawings, specifications, standards, and inspection requirements to identify an item or range of items.

NOTE

When a stock numbered item is requisitioned, the repair part received may have a different part number than the part being replaced.

e. *Federal Supply Code for Manufacturer (FSCM).* The FSCM is a 5-digit numeric code listed in SB 708-42 which is used to identify the manufacturer, distributor, or Government agency, etc.

f. *Description.* Indicates the Federal item name and, if required, a minimum description to identify the item.

g. *Unit of Measure (U/M).* Indicates the standard of the basic quantity of the listed item as used in performing the actual maintenance function. This measure is expressed by a two-character alphabetical abbreviation (e.g., ea. in, pr, etc). When the unit of measure differs from the unit of issue, the lowest unit of issue that will satisfy the required units of measure will be requisitioned.

h. *Quantity Incorporated in Unit.* Indicates the quantity of the item used in the breakout shown on the illustration figure, which is prepared for a functional group, subfunctional group, or an assembly.

4. Special Information

a. Usable on codes are shown in the description column. Uncoded items are applicable to all models. Identification of the usable on codes used in this publication are:

<i>Code</i>	<i>Used on</i>
2Q9	SB-675/MSC
2RA	SB-675A/MSC

b. The following publications pertain to the SB-675/MSC and SB-675A/MSC and its components:
 TB 750-240, Maintenance and Repair Procedures for S-141/G, S-144/G, S-250/G, S-280/G, and S-318/G Type Shelters
 TM 11-2300-369-15-1, Installation of Telephone Sets TA 312/PT and TA-1/PT with Reel Equipment CE-11 in Gun, AAA-20MM, XM167
 TM 11-5410-206-14P, Shelter, Electrical Equipment S-141/G and S-141B/G
 TM 11-5410-213-14P, Shelters, Electrical Equipment S-280A/G and S-280B/G
 TM 11-5805-201-12, Telephone Set TA-312/PT
 TM 11-5805-201-35, Telephone Set TA-312/PT
 TM 11-5805-246-10, Terminal, Telegraph TH5/TG
 TM 11-5805-246-20, Terminal, Telegraph TH5/TG
 TM 11-5805-246-20P, Terminals, Telegraph TH5/TG and TH-5A/TG
 TM 11-5805-246-34P, Terminals, Telegraph TH5/TG and TH-5A/TG
 TM 11-5805-246-35, Terminal, Telegraph TH5/TG
 TM 11-5805-262-12, Switchboards, Telephone, Manual SB-22/PT and SB-22A/PT
 TM 11-5805-262-20P, Telephone Switchboard SB-22A/PT
 TM 11-5805-262-35, Switchboards, Telephone, Manual SB-22/PT and SB-22A/PT

TM 11-5805-262-35P, Telephone Switchboard SB-22A/PT
 TM 11-5805-356-12, Terminal, Telegraph-Telephone AN/TCC-29 (including Terminal, Telegraph TH-22/TG and Converter, Telegraph Telephone Signal CV - 425/U)
 TM 11-5805-356-34-1, Terminal, Telegraph TH22/TG and Filter Assembly, Electrical F-316/U
 TM 11-5805-356-34P-1, Terminal, Telegraph TH-22/TG
 TM 11-5815-206-12, Teletypewriter Sets AN/ PGC-1 and AN/PGC-3, and Teletypewriters TT-4A/TG, TT - 4B/TG, TT-4C/TG, TT-335/ TG, TT-537/G, TT-698/TG, TT-698A/TG, and TT-698B/TG
 TM 11-5815-206-20P, Teletypewriter Set AN/ PG C-1 and Teletypewriter TT-4A/TG, TT4B/TG, TT-4C/TG, and TT-335/TG
 TM 11-5815-206-34, Teletypewriter Set AN/ PGC-! and AN/PGC-3, and Teletypewriters TT-4A/TG, TT 4B/TG TT - 4C/TG, TT-335/ TG, and TT-537/G, TT-698/TG, TT-698A/TG, and TT-698B/TG
 TM 11-5815-206-35P/1, Teletypewriters Set AN/PGC-1 including Teletypewriters TT-4A/ TG, TT-4B/TG, TT - C/TG, and TT-335/TG
 TM 11-5815-206-35P/2, Teletypewriter Set AN/ PGC-1 including Teletypewriters TT-4A/TG, TT-4B/TG, TT 4C/TG and TT-335/TG
 TM 11-5830-221-12, Intercommunication Stations LS-147A/FI, LS-147B/FI, LS-147C/FI, and LS-147D/FI
 TM 11-5830-221-24P, Intercommunications Station LS-147C/FI
 TM 11-5830-221-35, Intercommunication Stations LS-147A/FI, LS-147B/FI, LS-147C/FI and LS-147D/FI
 TM 11-5895-225-15, Panel, Patching Communication SB-675/MSC
 TM 11-5895-225-15-1, Panel, Patching Communication SB-675A/MSC
 TM 11-6110-201-15P, Distribution Boxes J-1077/ U and J-1077A/U
 TM 11-6110-243-14P, Distribution Box J-2317/ U and Distribution Box J-2317A/U
 TM 11-6625-251-15, Test Set TS-140/PCM, Signal Generator SG-15/PCM, and SG-15A/PCM and Decibel Meter ME-22/PCM and ME-22A/ PCM

5. How to Locate Repair Parts

a. When National stock number or part number is unknown.

- (1) *First.* Using the table of contents, determine the functional group within which the item belongs. This is necessary since illustrations are prepared for functional groups and listings are divided into the same groups.
- (2) *Second.* Find the illustration covering the functional group to which the item belongs.
- (3) *Third.* Identify the item on the illustration and note the illustration figure and item number of the item.
- (4) *Fourth.* Using the Repair Parts Listing, find the figure and item number noted on the illustration.

b. When National stock number or part number is known.

(1) *First.* Using the Index of National Stock Numbers and Part Numbers, find the pertinent National stock number or part number. This index is in NIIN sequence followed by a list of part numbers in alphameric sequence, cross-referenced to the illustration figure number and item number.

(2) *Second.* After finding the figure and item number, locate the figure and item number in the repair parts list.

6. Abbreviations

Not applicable.

(Next printed page is 6)

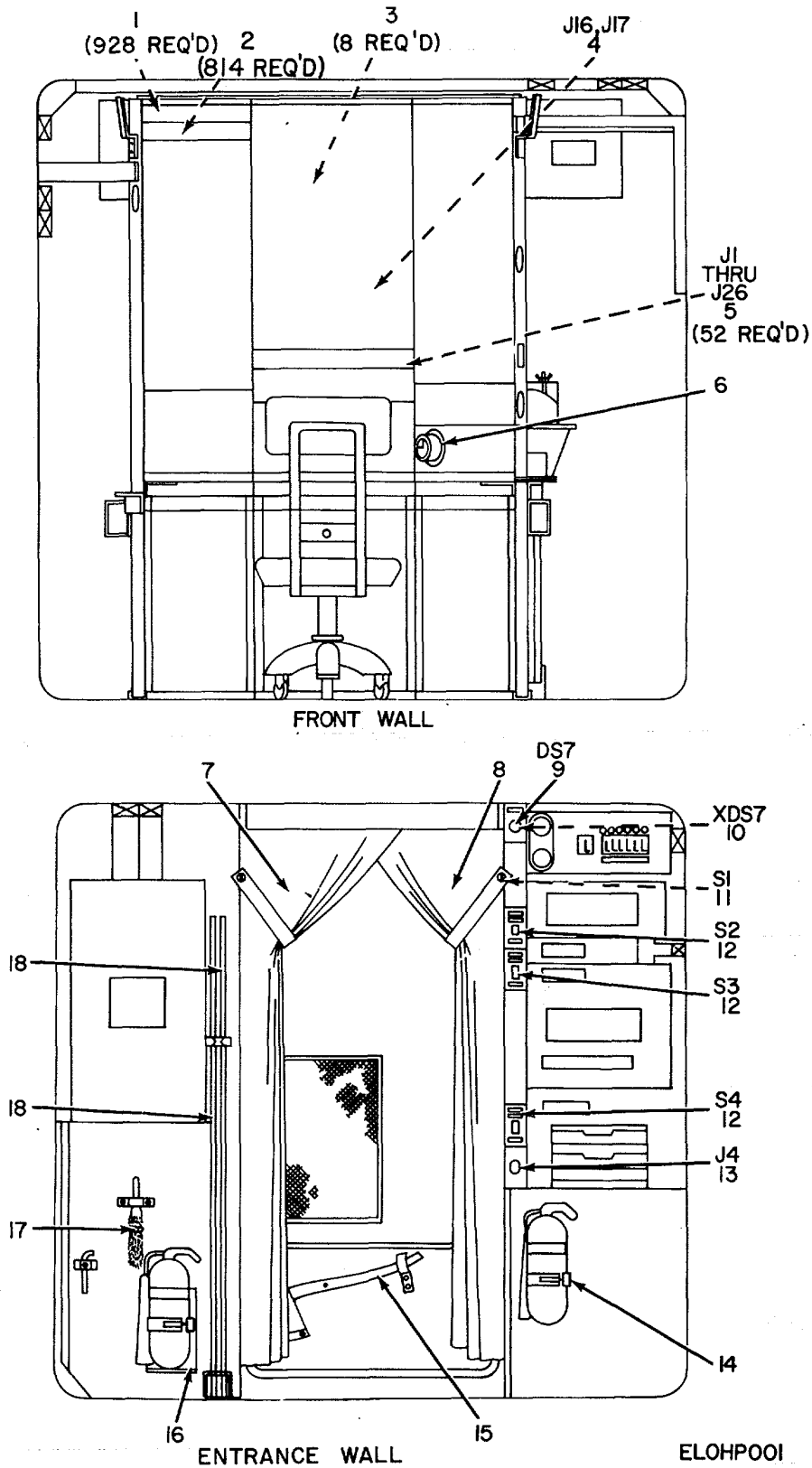


Figure 1. Panel, Patching Communications SB-675/MSC (Sheet 1 of 3).

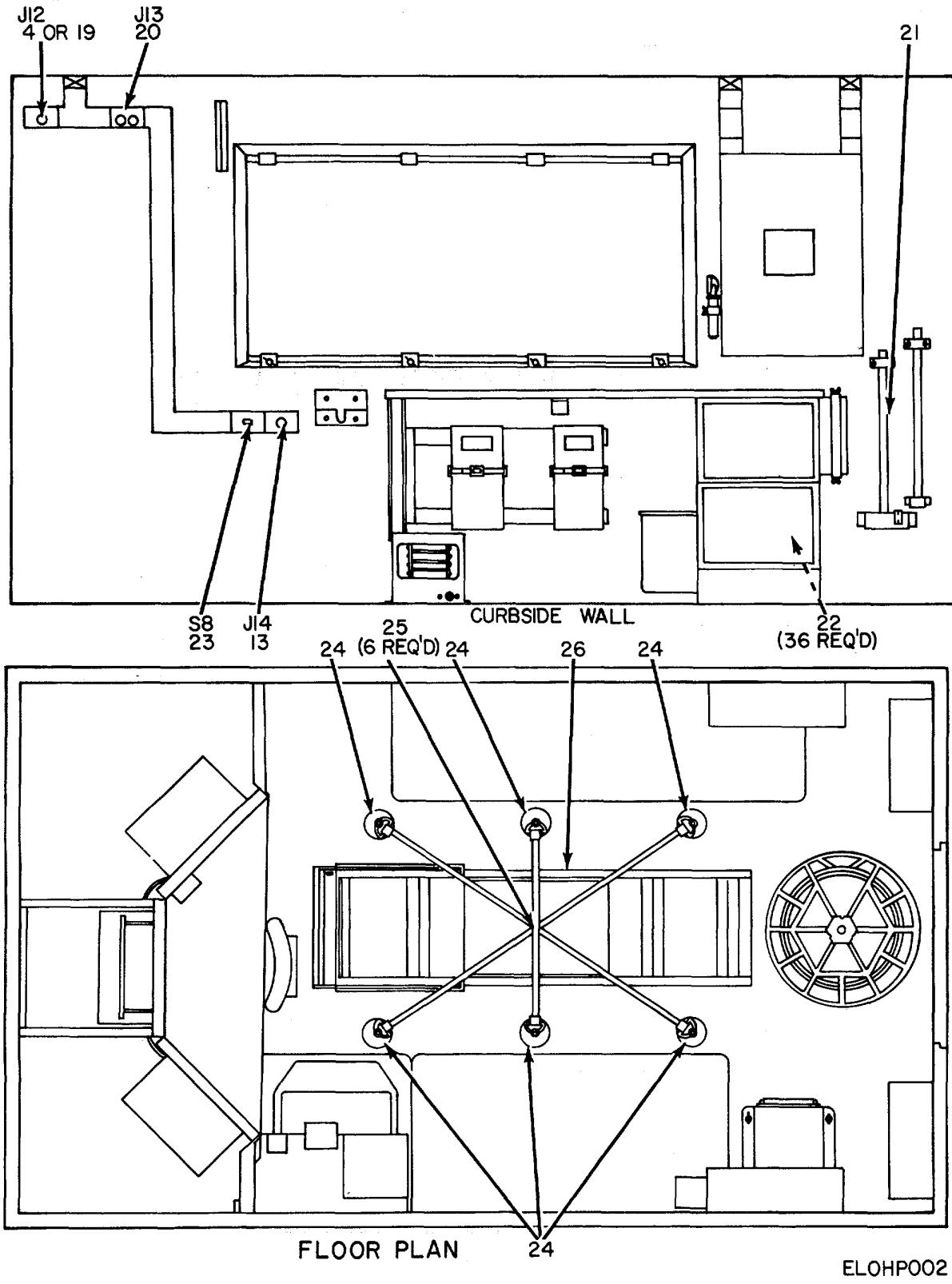


Figure 1. Panel, Patching Communications SB-675/MSC (Sheet 2 of 3).

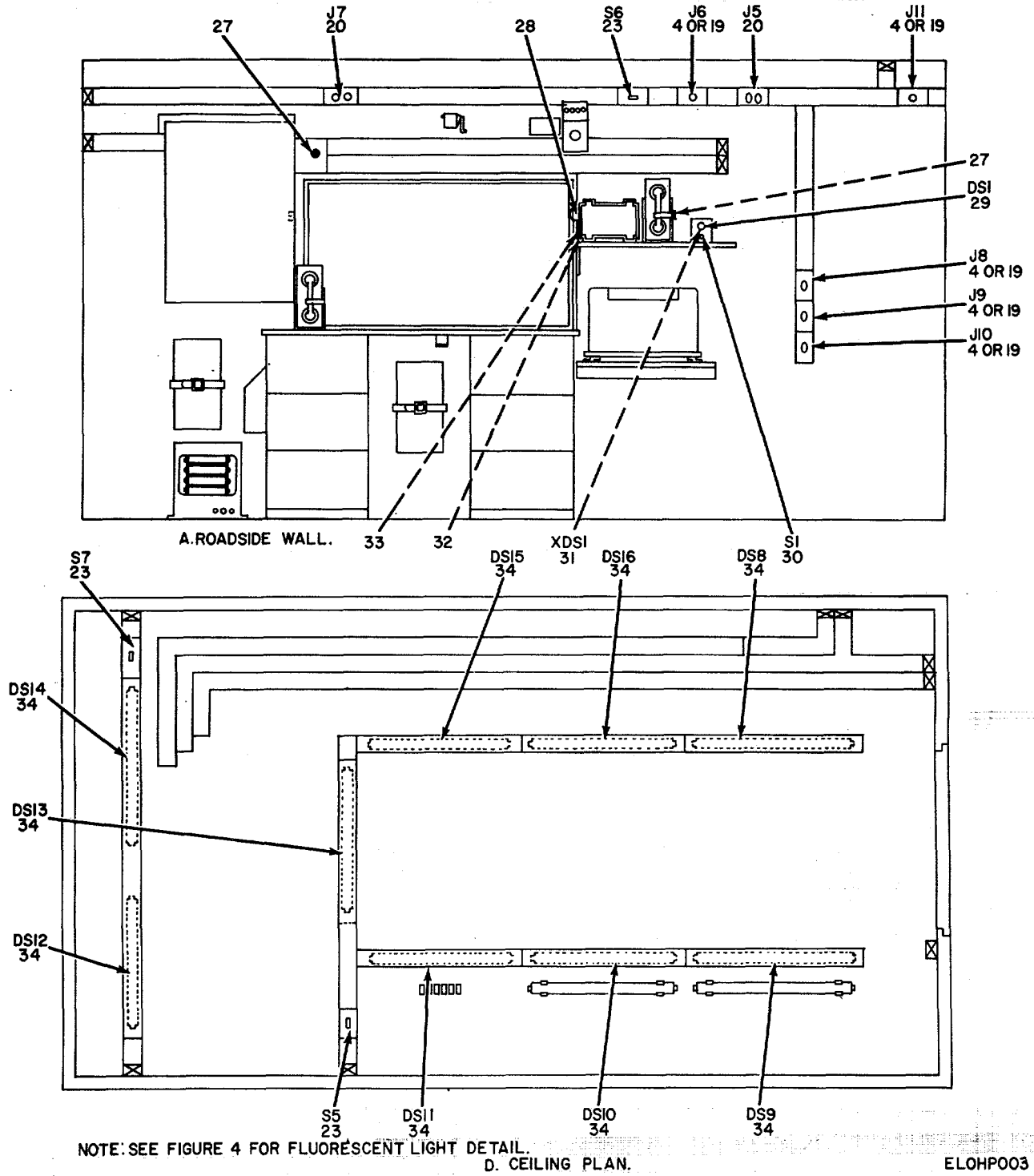


Figure 1. Panel, Patching Communications SB-675/MSC (Sheet 3 of 3).

SECTION II

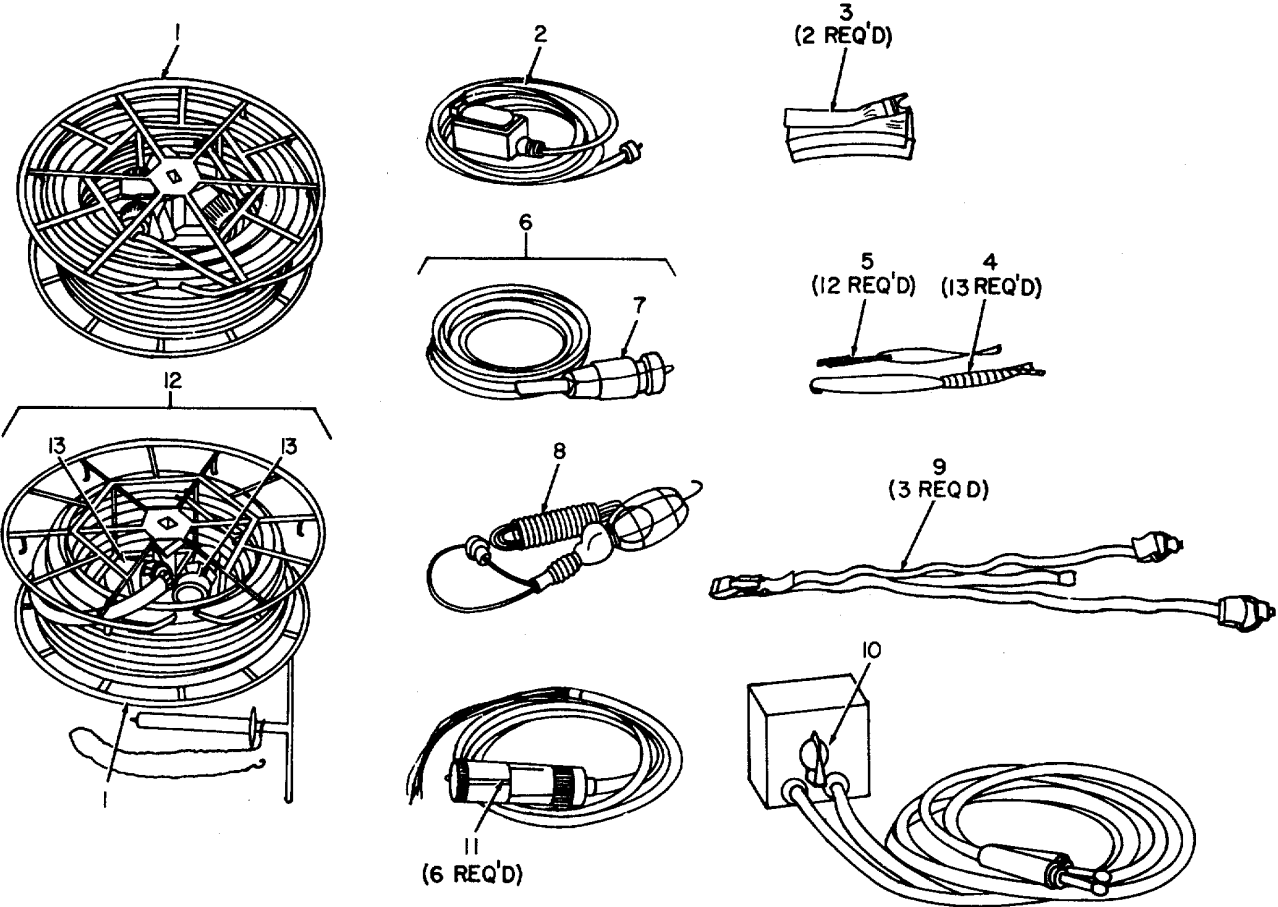
TM 11-5895-225-24P

(1) ILLUSTRATION		(2)	(3)	(4)	(5)	(6)	(7)	(8)
(a) FIG NO.	(b) ITEM NO.	SMR CODE	NATIONAL STOCK NUMBER	PART NUMBER	FSCM	DESCRIPTION USABLE ON CODE	U/M	QTY INC IN UNIT
						GROUP 00 PATCHING COMMUNICATIONS SB675-MSC.		
1	1	PAOZZ	5935-00-228-4038	JJ085	81349	JACK, TELEPHONE USED ON S-189/MSC,S-189A/MSC, S-189C/MSC, S-189D/MSC 2Q9	EA	920
1	2	PAOZZ	5935-00-192-4826	JJ086	81349	JACK, TELEPHONE USED ON S-189/MSC, S-189A/MSC, S-189B/MSC, S-189C/MSC, S-189D/MSC 2Q9	EA	814
1	3	PAOZZ	5950-00-769-0889	SMD350016	80063	TRANSFORMER, AUDIO FREQUENCY USED ON S-189/ MSC, S-189A/MSC, S-189B/MSC, S-189C/MSC, S-189D/MSC 2Q9	EA	8
1	4	PAOZZ	5935-00-350-1834	5261	74545	CONNECTOR, RECEPTACLE, ELECTRICAL, USED ON S-189D/MSC 2Q9	EA	8
1	4	PAOZZ	5935-00-199-0275	9213	74545	CONNECTOR, RECEPTACLE, ELECTRICAL USED ON S-189/MSC 189A/MSC, S-189B/MSC, S-189C/MSC 2Q9	EA	2
1	5	PAOZZ	5935-00-224-4213	JJ024	81349	JACK;TELEPHONE USED ON S-189/MSC,S-189A/MSC,S-189B/MSC 189C/MSC, S-189D/MSC 2Q9	EA	52
1	6	PAOZZ	6645-00-800-7094	SCC539475	80063	CLOCK,AIRCRAFT,MECHANICAL USED ON S-189/MSC 2Q9	EA	1
1	6	PAOZZ	6645-00-303-4950	MILC7939A	81349	CLOCK.AIRCRAFT.MECHANICAL USED ON S-189A/MSC, S-189B/MSC, S-189D/MSC 2Q9	EA	1
1	6	PAOZZ	6645-00-950-8599	MILC6499	81349	CLOCK,AIRCRAFT MECHANICAL USED ON S-189C/MUSC 2Q9	EA	1
1	7	PAOZZ	7230-00-792-6339	SMC352521GR1	80063	CURTAIN,BLACKOUT, USED ON S-189/MSC, S-189A/MSC, S-189B/MSC, S-189C/MSC,S-189D/MSC 2Q9	EA	1
1	8	PAOZZ	5410-00-792-6341	SMC352521GR2	80063	CURTAIN,BLACKOUT USED ON S-189/MSC,S-189A/MSC, S-189B/MSC,S-189C/MSC,S-189D/MSC 2Q9	EA	1
1	9	PAOZZ	6240-00-299-5876	NE34	80058	LAMP, GLOW USED ON S-189/MSC,S-189A/MSC, S-189B/MSC,S-189C/MSC,S-189D/MSC 2Q9	EA	1
1	10	PAOZZ	6250-00-109-1091	P823J	81091	LAMPHOLDER USED ON S-189/MSC,S-189A/MSC, S-189B/MSC,S-189C/MSC,S-189D/MSC 2Q9	EA	1
1	11	PAOZZ	5930-00-959-3441	BZ2RQ181P4	91929	SWITCH, SENSITIVE USED ON S-189/MSC,S-189A/MSC, S-189B/MSC,S-189C/MSC,S-189D/MSC 2Q9	EA	1
1	12	PAOZZ	5930-00-865-6101	5521-1	03497	SWITCH,TOGGLE USED ON S-189/MSC,S-189A/MSC, S-189B/MSC,S-189C/MSC,S-189D/MSC 2Q9	EA	3
1	13	XDOZZ		72108	74545	CONNECTOR, RECEPTACLE,ELECTRICAL USED ON S-189/MSC, S-189A/MSC, S-189B/MSC,S-189C/MSC,S-189D/MSC 2Q9	EA	2
1	14	PAOZZ	4210-00-383-7127	0213542	64959	BRACKET USED ON S-189/MSC,S-189A/MSC, S-189B/MSC,S-189C/MSC,S-189D/MSC 2Q9	EA	1
1	15	PAOZZ	4210-00-727-8111	216	02461	AXE.PICKHEAD USED ON S-189/MSC,S-189A/MSC, S-189B/MSC,S-189C/MSC,S-189D/MSC 2Q9	EA	1
1	15	PAOZZ	5110-00-293-2339	SCC539541	80063	AXE USED ON S-189/MSC 2Q9	EA	1
1	16	PAOZZ	4210-00-595-4085	SCC539468	80063	BRACKET USED ON S-189/MSC,S-189A/MSC S-189B/MSC,S-189C/MSC,S-189D/MSC 2Q9	EA	1
1	17	PAOZZ	7920-00-178-8315	SCD539649	80063	BRUSH, DUSTING, BENCH USED ON S-189/MSC,S-189A/MSC S-189B/MSC,S-189C/MSC,S-189D/MSC 2Q9	EA	1
1	18	PAODZ	5975-00-224-5260	MX148/G	80058	ROD,GROUND USED ON S-189/MSC,S-189A/MSC S-189B/MSC,S-189C/MSC,S-189D/MSC 2Q9	EA	2
1	19	PAOZZ	5935-00-359-6025	9210	174545	CONNECTOR RECEPTACLE ELECTRICAL USED ON S-189/MSC, S-189A/MSC, S-189B/MSC,S-189C/MSC,S-189D/MSC 2Q9	EA	6
1	20	PAOZZ	5935-00-644-8597	9200	66127	CONNECTOR, RECEPTACLE, ELECTRICAL USED ON S-189/MSC, S-189A/MSC, S-189B/MSC,S-189C/MSC,S-189D/MSC 2Q9	EA	3
1	20	PAOZZ	5935-00-283-4003	WC00596D7	81348	CONNECTOR, RECEPTACLE, ELECTRICAL USED ONS-189D/MSC 2Q9	EA	3
1	21	PAOZZ	5120-00-251-4489	GGGH86	81349	HAMMER, HAND USED ON S-189/MSC,S-189A/MSC S-189B/MSC,S-189C/MSC,S-189D/MSC 2Q9	EA	1

SECTION II

TM 11-5895-225-24P

(1) ILLUSTRATION		(2)	(3)	(4)	(5)	(6)	(7)	(8)
(a) FIG NO.	(b) ITEM NO.	SMR CODE	NATIONAL STOCK NUMBER	PART NUMBER	FSCM	DESCRIPTION <i>USABLE ON CODE</i>	U/M	QTY INC IN UNIT
1	22	PAOZZ	5975-00-705-5841	N3	06229	STRAP,RETAINING USED ON S-189/MSC,S-189A/MSC, S-189B/MSC,S-189C/MSC,S-189D/MSC 2Q9	EA	36
1	23	PAOZZ	5940-0-644-6730	F3036	24446	SWITCH,TOGGLE USED ON S-189/MSC,S-189A/MSC, S-189B/MSC,S-189C/MSC,S-189D/MSC 2Q9	EA	4
1	24	PAOZZ	5410-00-792-6335	SMB542412	80063	TIE-DOWN PLATE ASSEMBLY USED ON S-189/MSC,S-189A/MSC, S-189B/MSC,S-189C/MSC,S-189D/MSC 2Q9	EA	6
1	25	PAOZZ	5410-00-792-6336	P/N705	81902	STRAP ASSEMBLY,TIE DOWN USED ON S-189/MSC,S-189A/MSC, S-189B/MSC,S-189C/MSC,S-189D/MSC 2Q9	EA	6
1	26	PAOZZ	2540-00-892-6243	MX3391/G	80058	LADDER,VEHICLE BOARDING USED ON S-189/MSC,S-189A/MSC, S-189B/MSC,S-189C/MSC,S-189D/MSC 2Q9	EA	1
1	27	PAOZZ	5935-00-683-2746	JJ034	81349	JACK,TELEPHONE USED ON S-189/MSC,S-189A/MSC, S-189B/MSC,S-189C/MSC,S-189D/MSC 2Q9	EA	2
1	28	PAOZZ	5930-00-034-2386	PA1002	71590	SWITCH,ROTARY USED ON S-189/MSC,S-189A/MSC, S-189B/MSC,S-189C/MSC,S-189D/MSC 2Q9	EA	1
1	29	PAOZZ	6240-00-179-1814	NE45	80058	LAMP, GLOW USED ON S-189/MSC,S-189A/MSC, S-189B/MSC,S-189C/MSC,S-189D/MSC 2Q9	EA	1
1	30	PAOZZ	5930-00-615-7896	MS25098-22	81349	SWITCH,TOGGLE USED ON S-189/MSC,S-189A/MSC, S-189B/MSC,S-189C/MSC,S-189D/MSC 2Q9	EA	1
1	31	PAOZZ	6250-00-752-1233	4-74-6	95263	LAMPHOLDER USED ON S-189/MSC,S-189A/MSC, S-189B/MSC,S-189C/MSC,S-189D/MSC 2Q9	EA	1
1	31	PAOZZ	6250-00-079-9888	4-12-18	95263	LAMPHOLDER USED ON S-189D/MSC 2Q9	EA	1
1	32	PAOZZ	5120-00-293-2696	7113	95344	EXTRACTOR,ELECTRON TUBE USED ON S-189/MSC, S-189A/MSC, S-189B/MSC,S-189C/MSC,S-189D/MSC 2Q9	EA	1
1	33	PAOZZ	5120-00-508-0584	9113	95344	EXTRACTOR,ELECTRON TUBE USED ON S-189/MSC S-189A/MSC, S-189B/MSC,S-189C/MSC,S-189D/MSC 2Q9	EA	1
1	34	PAOZZ	6240-00-538-8447	F20T12/CM	24455	LAMP,FLUORESCENT USED ON S-189/MSC S-189A/MSC, S-189B/MSC,S-189C/MSC,S-189D/MSC 2Q9	EA	9



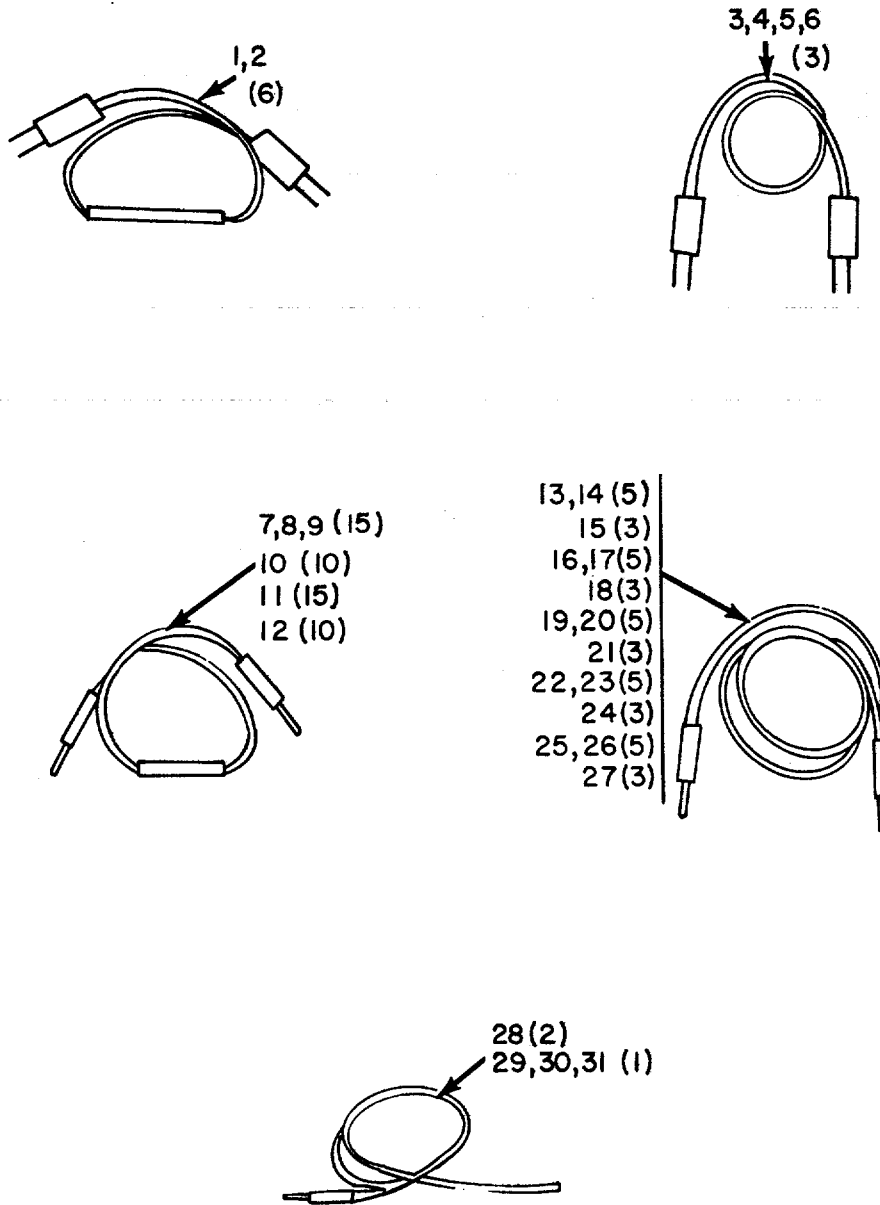
ELOHP004

Figure 2. Panel, Patching Communications SB-675/MSC, Miscellaneous Components.

SECTION II

TM 11-5895-225-24P

(1) ILLUSTRATION		(2)	(3)	(4)	(5)	(6)	(7)	(8)
(a) FIG NO.	(b) ITEM NO.	SMR CODE	NATIONAL STOCK NUMBER	PART NUMBER	FSCM	DESCRIPTION USABLE ON CODE	U/M	QTY INC IN UNIT
2	1	PAOZZ	8130-00-656-1090	RC435/U	80058	REEL CABLE USED ON S-189/MSC,S-189A/MSC, S-189B/MSC,S-189C/MSC,S-189D/MSC 2Q9	EA	2
2	2	PAOZZ	4940-00-752-2474	SMD350987G	80063	CABLE ASSEMBLY,POWER,ELECTRICAL USED ON S-189/MSC, S-189A/MSC, S-189B/MSC,S-189C/MSC,S-189D/MSC 2Q9	EA	1
2	3	PAOZZ	4940-00-752-2525	SMB352166	80058	LEAD,ELECTRICAL USED ON S-189/MSC,S-189A/MSC, S-189B/MSC, S-189C/MSC,S-189D/MSC 2Q9	EA	2
2	4	PAOZZ	5120-00-776-9917	EQA68P	95344	GRIP,CABLE,JAW USED ON S-189/MSC,S-189A/MSC, S-189B/MSC,S-189C/MSC,S-189D/MSC	EA	13
2	5	PAOZZ	5120-00-776-9918	EQA265	95344	GRIP,CABLE,JAW USED ON S-189/MSC,S-189A/MSC, S-189B/MSC,S-189C/MSC,S-189D/MSC 2Q9	EA	12
2	6	XDOZZ		CX7705U	80058	CABLE ASSEMBLY,POWER,ELECTRICAL USED ON S-189/MSC S-189A/MSC, S-189B/MSC,S-189C/MSC,S-189D/MSC 2Q9	EA	1
2	7	PAOZZ	5935-00-134-5266	U237BG	80058	CONNECTOR,PLUG,ELECTRICAL USED ON S-189/MSC, S-189A/MSC, S-189B/MSC,S-189C/MSC,S-189D/MSC 2Q9	EA	1
2	8	PAOZZ	6230-00-115-2687	SCC539496	80063	LIGHT, EXTENSION USED ON S-189/MSC,S-189A/MSC, S-189B/MSC,S-189C/MSC,S-189D/MSC 2Q9	EA	1
2	9	PAOZZ	5340-00-592-7996	N7	06229	STRAP,RETAINING USED ON S-189/MSC,S-189A/MSC, S-189B/MSC,S-189C/MSC,S-189D/MSC 2Q9	EA	3
2	10	PAOZZ	5355-00-570-5562	SMB184158	80063	KNOB USED ON S-189/MSC,S-189A/MSC, S-189B/MSC,S-189C/MSC,S-189D/MSC 2Q9	EA	1
2	11	PAOZZ	5935-00-045-9830	U185B/G	81349	CONNECTOR,PLUG,ELECTRICAL USED ON S-189/MSC, S-189A/MSC, S-189B/MSC,S-189C/MSC,S-189D/MSC 2Q9	EA	6
2	12	PAOZZ	1560-00-889-1500	CX7453/U	80058	CABLE ASSEMBLY, POWER,ELECTRICAL USED ON S-189/MSC S-189A/MSC, S-189B/MSC,S-189C/MSC,S-189D/MSC 2Q9	EA	1
2	13	PAOZZ	5935-00-064-5731	U237B/G	81349	CONNECTOR,PLUG,ELECTRICAL USED ON S-189/MSC, S-189A/MSC, S-189B/MSC,S-189C/MSC,S-189D/MSC 2Q9	EA	2



ELOHP005

Figure 3. Panel, Patching Communications SB-675/MSC, Cable Assemblies

SECTION II

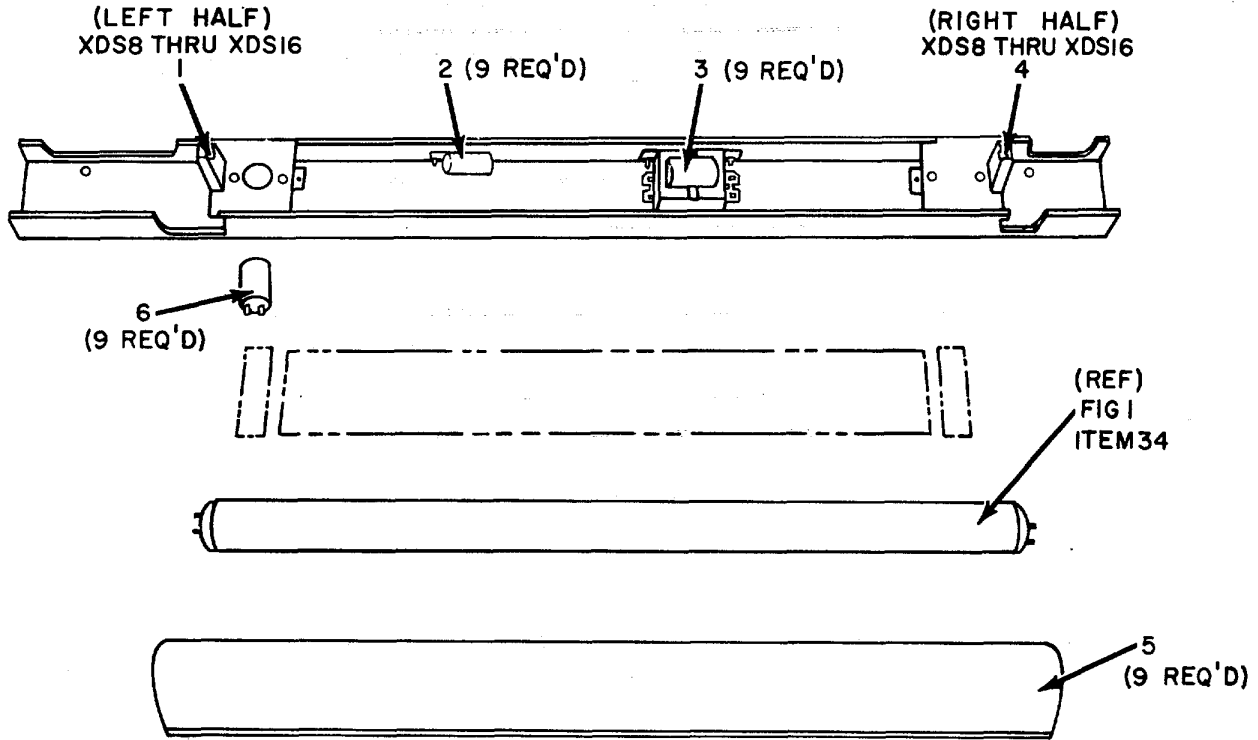
TM 11-5895-225-24P

(1) ILLUSTRATION		(2)	(3)	(4)	(5)	(6)	(7)	(8)
(a) FIG NO.	(b) ITEM NO.	SMR CODE	NATIONAL STOCK NUMBER	PART NUMBER	FSCM	DESCRIPTION USABLE ON CODE	U/M	QTY INC IN UNIT
3	1	PAOZZ	5995-00-752-2587	SMD352619AGR2	80063	CORD ASSEMBLY.ELECTRICAL USED ON S-189/MSC, S-189A/MSC, S-189B/MSC,S-189C/MSC,S-189D/MSC	2Q9	EA 6
3	2	PAOZZ	5995-00-752-2586	SMD352620AGR3	80063	CORD ASSEMBLY.ELECTRICAL USED ON S-189/MSC, S-189A/MSC, S-189B/MSC,S-189C/MSC,S-189D/MSC	2Q9	EA 6
3	3	PAOZZ	5995-00-752-2585	SMD352617A6R2	80063	CORD ASSEMBLY.ELECTRICAL USED ON S-189/MSC, S-189A/MSC, S-189B/MSC,S-189C/MSC,S-189D/MSC	2Q9	EA 3
3	4	PAOZZ	5995-00-752-2589	SMD352618GR2	80063	CORD, ASSEMBLY, ELECTRICAL USED ON S-189/MSC, S-189A/MSC, S-189B/MSC,S-189C/MSC,S-189D/MSC	2Q9	EA 3
3	5	PAOZZ	5995-00-752-2588	666148-266	12436	CORD ASSEMBLY,ELECTRICAL USED ON S-189/MSC, S-189A/MSC, S-189B/MSC,S-189C/MSC,S-189D/MSC	2Q9	EA 3
3	6	PAOZZ	5995-00-752-2590	SMD352617AGR3	80063	CORD ASSEMBLY,ELECTRICAL USED ON S-189/MSC, S-189A/MSC, S-189B/MSC,S-189C/MSC,S-189D/MSC	2Q9	EA 3
3	7	PAOZZ	5995-00-752-2498	SMD352598AGR3	80063	CABLE ASSEMBLY,TELEPHONE USED ON S-189/MSC, S-189A/MSC, S-189B/MSC,S-189C/MSC,S-189D/MSC	2Q9	EA 15
3	8	PADZZ	5995-00-752-2496	SMD352598AGR4	80063	CABLE ASSEMBLY, TELEPHONE USED ON S-189/MSC, S-189A/MSC, S-189B/MSC,S-189C/MSC,S-189D/MSC	2Q9	EA 15
3	9	PAOZZ	5995-00-752-2495	SMD352599AGR4	80063	CABLE ASSEMBLY,TELEPHONE USED ON S-189/MSC, S-189A/MSC, S-189B/MSC,S-189C/MSC,S-189D/MSC	2Q9	EA 15
3	10	PAOZZ	5995-00-752-2601	SMD352598AGR5	80063	CABLE ASSEMBLY,TELEPHONE USED ON S-189/MSC, S-189A/MSC, S-189B/MSC,S-189C/MSC,S-189D/MSC	2Q9	EA 10
3	11	PAOZZ	5995-00-752-2499	SMD352599AGR4	80063	CABLE ASSEMBLY,TELEPHONE USED ON S-189/MSC, S-189A/MSC, S-189B/MSC,S-189C/MSC,S-189D/MSC	2Q9	EA 15
3	12	PAOZZ	5995-00-752-2495	666148-238	12436	CABLE ASSEMBLY,TELEPHONE USED ON S-189/MSC, S-189A/MSC, S-189B/MSC,S-189C/MSC,S-189D/MSC	2Q9	EA 10
3	13	PAOZZ	5995-00-752-2514	SMD352593R3	80063	CABLE ASSEMBLY,TELEPHONE USED ON S-189/MSC, S-189A/MSC, S-189B/MSC, S-189C/MSC, S-189D/MSC	2Q9	EA 5
3	14	PAOZZ	5995-00-752-2514	SMD352593GR-5	80063	CABLE ASSEMBLY,TELEPHONE USED ON S-189/MSC, S-189A/MSC, S-189B/MSC, S-189C/MSC,S-189D/MSC,	2Q9	EA 3
3	15	PADZZ	5995-00-752-2514	SMD352593GR5	80063	CABLE ASSEMBLY,TELEPHONE USED ON S-189/MSC, S-189A/MSC, S-189B/MSC, S-189C/MSC,S-189D/MSC,	2Q9	EA 3
3	16	PAOZZ	5995-00-S2-2515	SMD352594BGR3	80063	CABLE ASSEMBLY,TELEPHONE USED ON S-189/MSC, S-189A/MSC, S-189B/MSC, S-189C/MSC,S-189D/MSC,	2Q9	EA 3
3	17	PAOZZ	5995-00-752-2549	SMD3525945GR4	80063	CABLE ASSEMBLY,TELEPHONE USED ON S-189/MSC, S-189A/MSC, S-189B/MSC, S-189C/MSC,S-189D/MSC,	2Q9	EA 5
3	18	PAOZZ	5995-00-752-2513	SMD352594BGR4	80063	CABLE ASSEMBLY,TELEPHONE USED ON S-189/MSC, S-189A/MSC, S-189B/MSC, S-189C/MSC,S-189D/MSC,	2Q9	EA 5
3	19	PAOZZ	5995-00-752-2594	SMD352595BGR3	80063	CABLE ASSEMBLY,TELEPHONE USED ON S-189/MSC, S-189A/MSC, S-189B/MSC, S-189C/MSC,S-189D/MSC,	2Q9	EA 5
3	20	PAOZZ	5994-00-752-2595	SMD352595BGR4	80063	CABLE ASSEMBLY,TELEPHONE USED ON S-189/MSC, S-189A/MSC, S-189B/MSC, S-189C/MSC,S-189D/MSC,	2Q9	EA 5
3	21	PAOZZ	5995-00-752-2596	SMD352595BGR5	80063	CABLE ASSEMBLY,TELEPHONE USED ON S-189/MSC, S-189A/MSC, S-189B/MSC, S-189C/MSC,S-189D/MSC,	2Q9	EA 3
3	22	PAOZZ	5995-00-752-2594	SMD352595BGR3	80063	CABLE ASSEMBLY,TELEPHONE USED ON S-189/MSC, S-189A/MSC, S-189B/MSC, S-189C/MSC,S-189D/MSC,	2Q9	EA 5
3	23	PAOZZ	5995-00-752-2592	SMD352596BGR4	80063	CABLE ASSEMBLY, TELEPHONE USED ON S-189/MSC, S-189A/MSC, S-189B/MSC, S-189C/MSC,S-189D/MSC,	2Q9	EA 5
3	24	PAOZZ	5995-00-752-2599	666148-229	12436	CABLE ASSEMBLY, TELEPHONE USED ON S-189/MSC, S-189A/MSC, S-189B/MSC, S-189C/MSC,S-189D/MSC,	2Q9	EA 3
3	25	PAOZZ	5995-00-752-2597	SMD352597BGR3	80063	CABLE ASSEMBLY,TELEPHONE USED ON S-189/MSC, S-189A/MSC, S-189B/MSC, S-189C/MSC,S-189D/MSC,	2Q9	EA 5
3	26	PAOZZ	5995-00-752-2598	SMD352597BGR4	80063	CABLE ASSEMBLY,TELEPHONE USED ON S-189/MSC, S-189A/MSC, S-189B/MSC, S-189C/MSC,S-189D/MSC,	2Q9	EA 5

SECTION II

TM 11-5895-225-24P

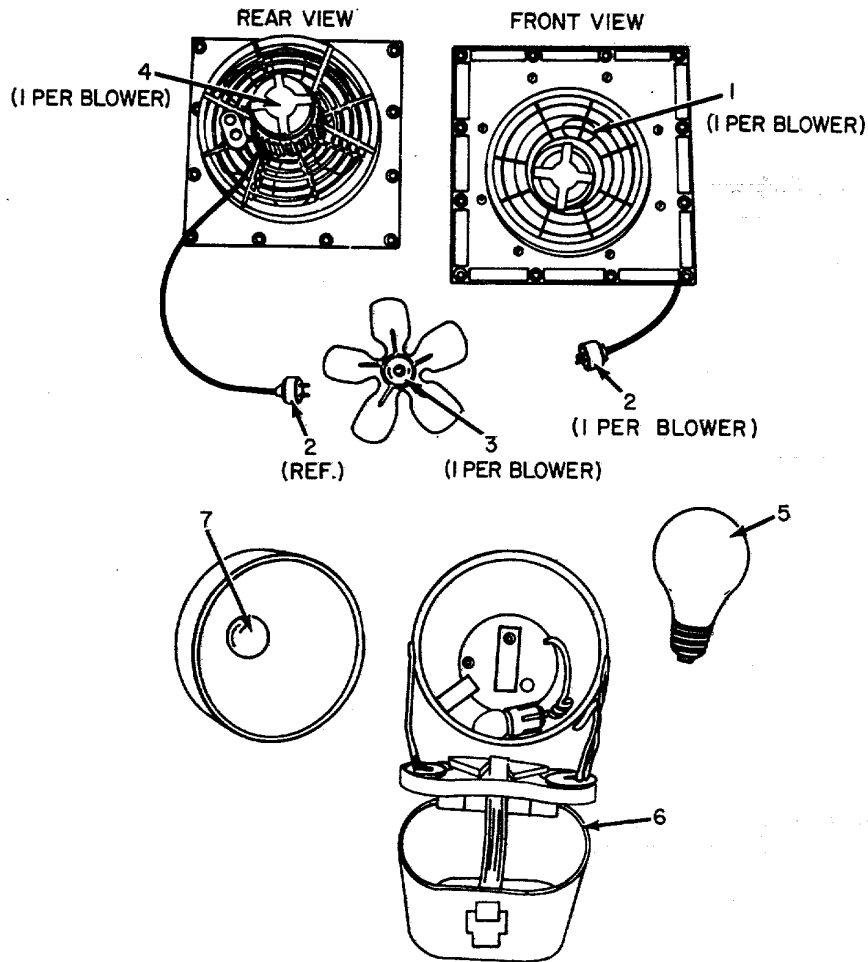
(1) ILLUSTRATION		(2)	(3)	(4)	(5)	(6)	(7)	(8)
(a) FIG NO.	(b) ITEM NO.	SMR CODE	NATIONAL STOCK NUMBER	PART NUMBER	FSCM	DESCRIPTION <i>USABLE ON CODE</i>	U/M	QTY INC IN UNIT
3	27	PAOZZ	5995-00-752-2599	SMD35297B8R5	80063	CABLE ASSEMBLY, TELEPHONE USED ON S-189/MSC, S-189A/MSC, S-189B/MSC, S-189C/MSC, S-189D/MSC, 2Q9	EA	3
3	28	PAOZZ	5995-00-752-2566	SMD383873GR3	80063	CABLE ASSEMBLY, TELEPHONE USED ON S-189/MSC, S-189A/MSC, S-189B/MSC, S-189C/MSC, S-189D/MSC, 2Q9	EA	2
3	29	PAOZZ	5995-00-752-1346	SMD383873GR5	80063	CABLE ASSEMBLY, TELEPHONE USED ON S-189/MSC S-189A/MSC, S-189B/MSC, S-189C/MSC, S-189D/MSC, 2Q9	EA	1
3	30	PAOZZ	5995-00-889-0608	SMD384145GR2	80063	CABLE ASSEMBLY, TELEPHONE USED ON S-189/MSC, S-189A/MSC, S-189B/MSC, S-189C/MSC, S-189D/MSC, 2Q9	EA	1
3	31	PAOZZ	5995-00-823-3016	SMD384145GR1	80063	CABLE ASSEMBLY, TELEPHONE USED ON S-189/MSC, S-189A/MSC, S-189B/MSC, S-189C/MSC, S-189D/MSC, 2Q9	EA	1



ELOHP006

Figure 4. Panel, Patching Communications SB-675/MSC, Fluorescent Light.

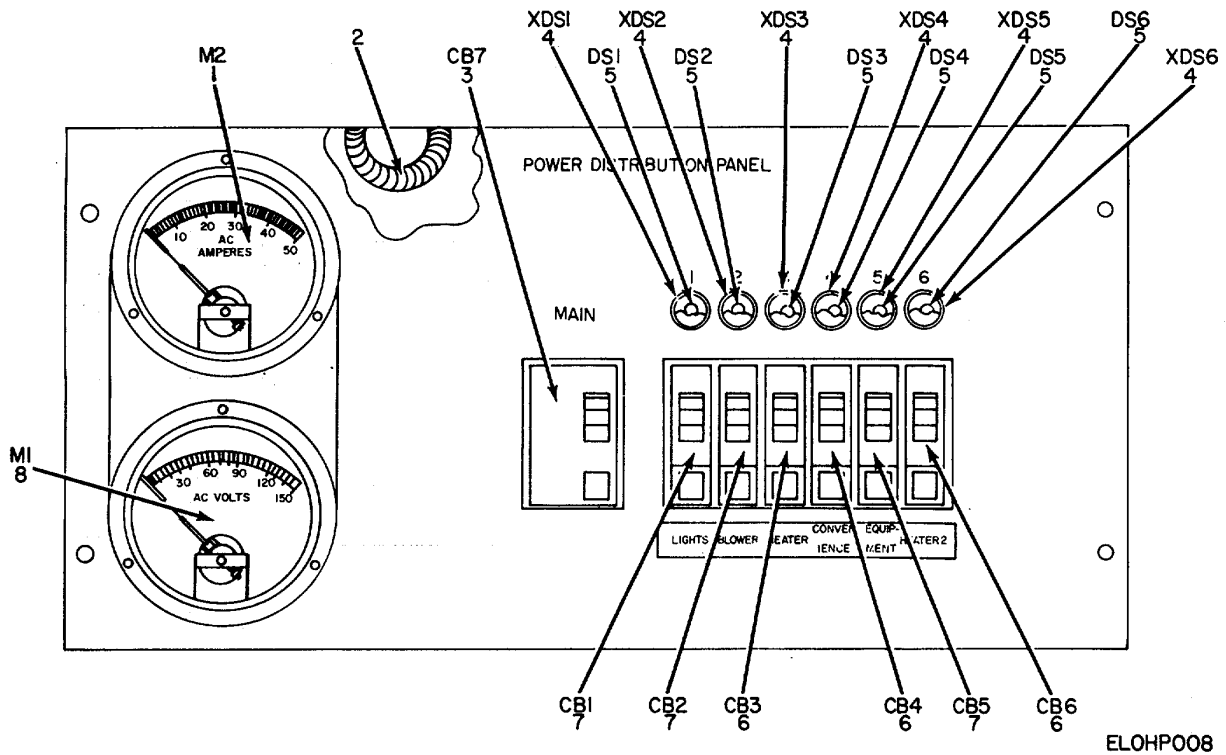
(1) ILLUSTRATION		(2)	(3)	(4)	(5)	(6)	(7)	(8)
(a) FIG NO.	(b) ITEM NO.	SMR CODE	NATIONAL STOCK NUMBER	PART NUMBER	FSCM	DESCRIPTION USABLE ON CODE	U/M	QTY INC IN UNIT
4	1	PAOZZ	6250-00-174-4684	698141818	80063	LAMPHOLDER USED ON S-189/MSC, S-189A/MSC, S-189B/MSC, S-189C/MSC, S-189D/MSC, 2Q9	EA	9
4	2	PAOZZ	5910-00-553-6096	591A	02777	CAPACITOR, FIXED, PAPER USED ON S-189/MSC, S-189A/MSC, S-189B/MSC, S-189C/MSC, S-189D/MSC, 2Q9	EA	9
4	3	PAOZZ	6250-00-804-3449	89G457	08595	BALLAST, LAMP USED ON S-189/MSC, S-189A/MSC, S-189A/MSC, S-189B/MSC, S-189C/MSC, S-189D/MSC, 2Q9	EA	9
4	4	PAOZZ	6250-00-175-2559	78X491	41326	LAMPHOLDER USED ON S-189/MSC, S-189A/MSC, S-189B/MSC, S-189C/MSC, S-189D/MSC 2Q9	EA	9
4	5	PAOZZ	6210-00-754-8134	SMC349983	80063	SHIELD, LIGHT USED ON S-189/MSC, S-189A/MSC, S-189B/MSC 2Q9	EA	9
4	5	PAOZZ	6210-00-686-5568	SMB335531	80063	SHIELD, LIGHT USED ON S-189C/MSC 2Q9	EA	9
4	5	PAOZZ	6210-00-921-6682	SCC539466	80063	SHIELD, LIGHT USED ON S-189D/MSC 2Q9	EA	9
4	6	PAOZZ	6250-00-299-2884	FS2	71183	STARTER, FLUORESCENT USED ON S-189/MSC, S-189A/MSC, S-189B/MSC, S-189C/MSC, S-189D/MSC 2Q9	EA	9



ELOHP007

Figure 5. Panel, Patching Communications SB-675/MSC, Exhaust Fan and Lantern.

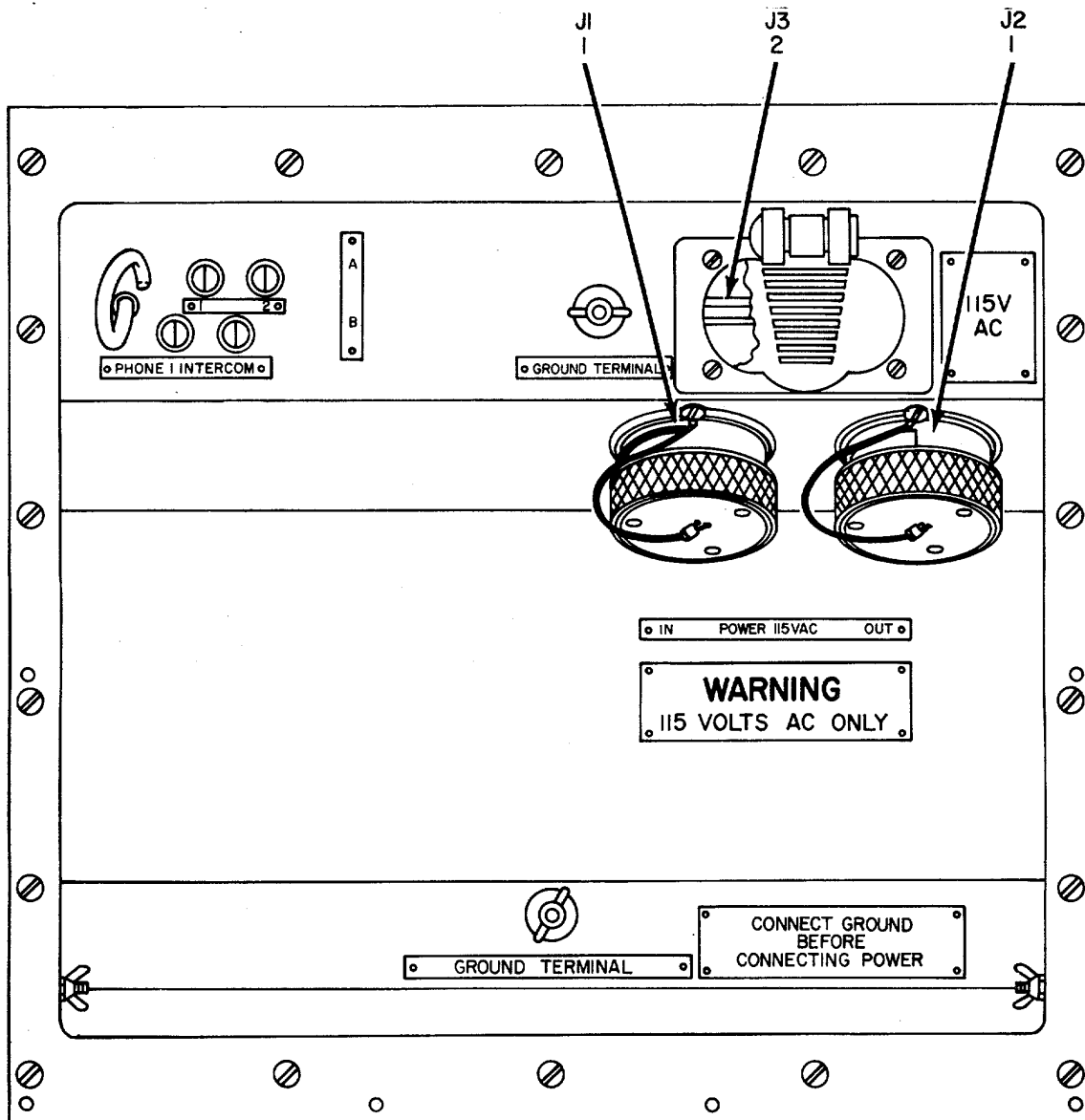
(1) ILLUSTRATION		(2)	(3)	(4)	(5)	(6)	(7)	(8)
(a) FIG NO.	(b) ITEM NO.	SMR CODE	NATIONAL STOCK NUMBER	PART NUMBER	FSCM	DESCRIPTION USABLE ON CODE	U/M	QTY INC IN UNIT
5	1	PAOZZ	5910-00-713-8313	P150F83	00656	CAPACITOR, FIXED, PAPER USED ON S-189/MSC, S-189A/MSC, S-189B/MSC, S-189C/MSC, S-189D/MSC	EA	2
5	2	PAOZZ	5935-00-149-3985	9754	74545	CONNECTOR, PLUG, ELECTRICAL USED ON S-189/MSC, S-189A/MSC, S-189B/MSC, S-189C/MSC	EA	2
5	3	PAOZZ	4140-00-792-8395	23396-02	82877	IMPELLER, FAN USED ON S-189/MSC, S-189A/MSC	EA	2
5	4	PAOZZ	6105-00-792-8384	23396-OL	82877	MOTOR, ALTERNATING CURRENT USED ON S-189/MSC	EA	2
5	4	PAOZZ	6105-00-561-6321	A8265M1	72560	MOTOR, ALTERNATING CURRENT USED ON S-189A/MSC, S-189B/MSC, S-189C/MSC	EA	2
5	4	PAOZZ	6105-00-999-4814	SKH37KG712X	88422	MOTOR, ALTERNATING CURRENT USED ON S-189D/MSC	EA	2
5	5	PAOZZ	6240-00-143-3070	MS15586-2	96906	LAMP, INCANDESCENT USED ON S-189/MSC, S-189A/MSC, S-189B/MSC, S-189C/MSC, S-189D/MSC	EA	1
5	6	PAOZZ	6230-00-729-9614	2106-7	132572	LANTERN, ELECTRIC USED ON S-189/MSC, S-189A/MSC, S-189B/MSC, S-189C/MSC, S-189D/MSC	EA	1
5	7	PAOZZ	6240-00-155-7786	PR2	08108	LAMP, INCANDESCENT USED ON S-189/MSC, S-189A/MSC, S-189B/MSC, S-189C/MSC, S-189D/MSC	EA	1



ELOHPO08

Figure 6. Panel, Patching Communications SB-675/MSC, Power Distribution Panel.

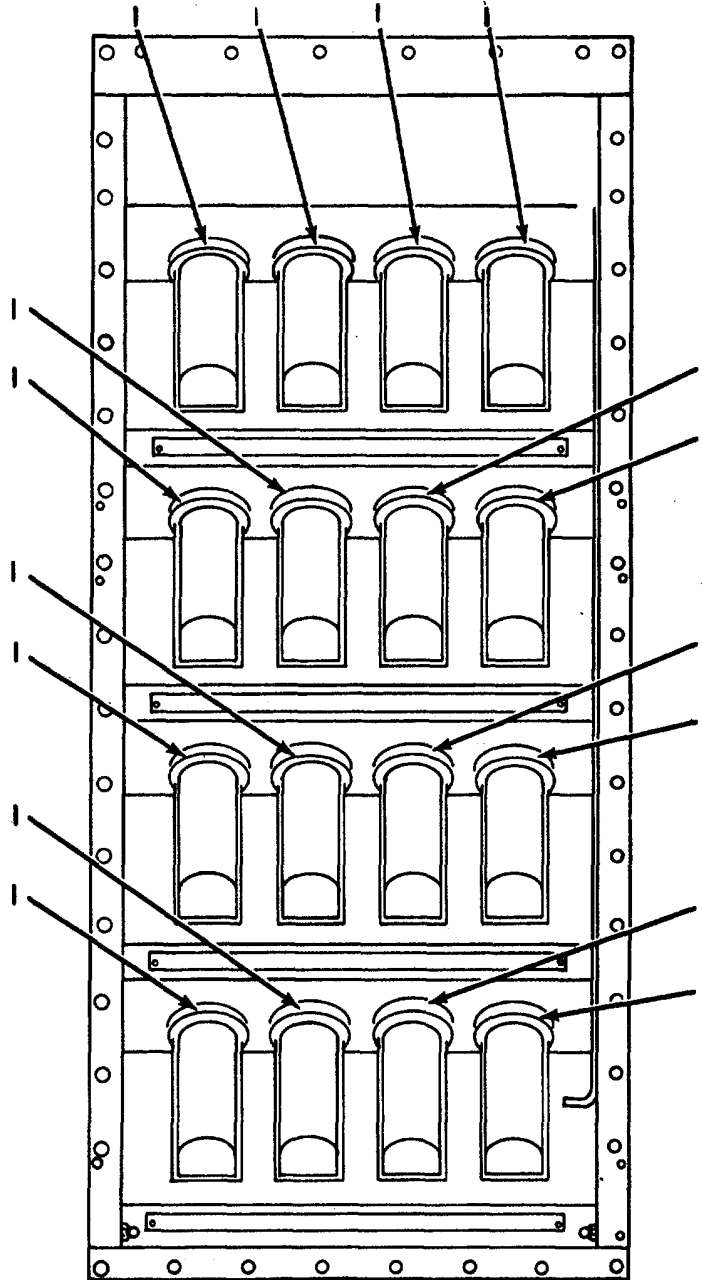
(1) ILLUSTRATION		(2)	(3)	(4)	(5)	(6)	(7)	(8)
(a) FIG NO.	(b) ITEM NO.	SMR CODE	NATIONAL STOCK NUMBER	PART NUMBER	FSCM	DESCRIPTION <i>USABLE ON CODE</i>	U/M	QTY INC IN UNIT
6	1	PAOZZ	6625-00-542-1897	MR36WOSOACAAR	81349	AMMETER USED ON S-189/MSC, S-189A/MSC, S-189B/MSC, S-189C/MSC, S-189D/MSC 2Q9	EA	1
6	2	PAOZZ	5950-00-705-9105	3CT35B	93993	TRANSFORMER, CURRENT USED ON S-189/MSC, S-189A/MSC, S-189B/MSC, S-189C/MSC, S-189D/MSC 2Q9	EA	3
6	3	PAOZZ	5925-00-703-6084	QO-250	04809	CIRCUIT BREAKER USED ON S-189/MSC, S-189A/MSC, S-189B/MSC, S-189C/MSC, S-189D/MSC 2Q9	EA	1
6	4	PAOZZ	6250-00-752-1233	4-74-6	95263	LAMPHOLDER USED ON S-189/MSC, S-189A/MSC, S-189B/MSC, S-189C/MSC, S-189D/MSC 2Q9	EA	6
6	4	PAOZZ	6250-00-079-9888	4-12-18	95263	LAMPHOLDER USED ON S-189D/MSC 209	EA	6
6	5	PAOZZ	6240-00-179-1814	NE45	80058	LAMP, GLOW USED ON S-189/MSC, S-189A/MSC, S-189B/MSC, S-189C/MSC, S-189D/MSC	EA	6
6	6	PAOZZ	5925-00-583-7941	QO-120	88753	CIRCUIT BREAKER USED ON S-189/MSC, S-189A/MSC, S-189B/MSC, S-189C/MSC, S-189D/MSC 2Q9	EA	3
6	7	PAOZZ	5925-00-818-4811	QO-115	81487	CIRCUIT BREAKER USED ON S-189/MSC, S-189A/MSC, S-189B/MSC, S-189C/MSC, S-189D/MSC 2Q9	EA	3
6	8	PAOZZ	6625-00-669-5019	MR36W150ACVV	81349	VOLTMETER USED ON S-189/MSC, S-189A/MSC, S-189B/MSC, S-189C/MSC, S-189D/MSC 2Q9	EA	1



ELOHP009

Figure 6. Panel, Patching Communications SB-675/MSC, Power Distribution Panel.

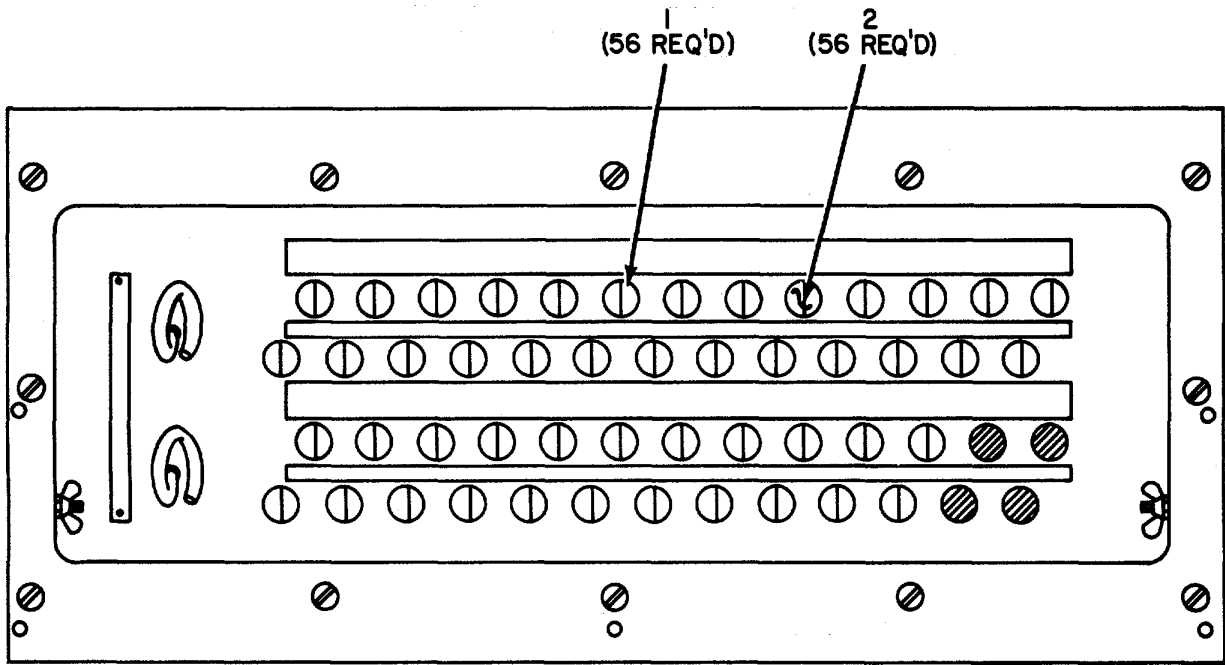
(1) ILLUSTRATION		(2)	(3)	(4)	(5)	(6)	(7)	(8)
(a) FIG NO.	(b) ITEM NO.	SMR CODE	NATIONAL STOCK NUMBER	PART NUMBER	FSCM	DESCRIPTION USABLE ON CODE	U/M	QTY INC IN UNIT
7	1	PAOZZ	5935-00-064-5732	U23B3/G	81349	CONNECTOR, RECEPTACLE, ELECTRICAL USED ON S-189/MSC S-189A/MSC, S-189B/MSC, S-189C/MSC, S-189D/MSC 2Q9	EA	2
7	2	PAOZZ	5935-00-644-8597	9200	66127	CONNECTOR, RECEPTACLE, ELECTRICAL USED ON S-189/MSC S-189A/MSC, S-189B/MSC, S-189C/MSC 2Q9	EA	1
7	2	PAOZZ	5935-00-283-4003	WC00596D7	81348	CONNECTOR, RECEPTACLE, ELECTRICAL USED ON S-189D/MSC 2Q9	EA	1



NOTE:
ITEM 1 HAS 44 REQ'D-16 USED ON SIGNAL
ENTRANCE BOXES A AND B, 12 USED ON
SIGNAL ENTRANCE BOX C. ELOHPOIO

Figure 8. Panel, Patching Communications SB-675/MSC, Signal Entrance Box.

(1) ILLUSTRATION		(2)	(3)	(4)	(5)	(6)	(7)	(8)
(a) FIG NO.	(b) ITEM NO.	SMR CODE	NATIONAL STOCK NUMBER	PART NUMBER	FSCM	DESCRIPTION USABLE ON CODE	U/M	QTY INC IN UNIT
8	1	PAFZZ	5935-00-045-9832	U187AG	80058	CONNECTOR, RECEPTACLE, ELECTRICAL USED ON S-189/MSC, S-189A/MSC, S-189B/MSC, S-189C/MSC, S-189D/MSC 2Q9	EA	44



ELOHP011

Figure 9. Panel, Patching Communications SB-675/MSC, Binding Post Signal Box.

(1) ILLUSTRATION		(2)	(3)	(4)	(5)	(6)	(7)	(8)
(a) FIG NO.	(b) ITEM NO.	SMR CODE	NATIONAL STOCK NUMBER	PART NUMBER	FSCM	DESCRIPTION <i>USABLE ON CODE</i>	U/M	QTY INC IN UNIT
9	1	PAOZZ	5970-00-S69-6263	SCC76202-1	80063	CAP, ELECTRICAL USED ON S-189/MSC, S-189A/MSC S-189B/MSC, S-189C/MSC, S-189D/MSC 2Q9	EA	56
9	2	PAOZZ	5940-00-937-5237	PBO8NAO1	81349	POST, BINDING USED ON S-189/MSC, S-189A/MSC, S-189B/MSC, S-189C/MSC, S-189D/MSC 2Q9	EA	56

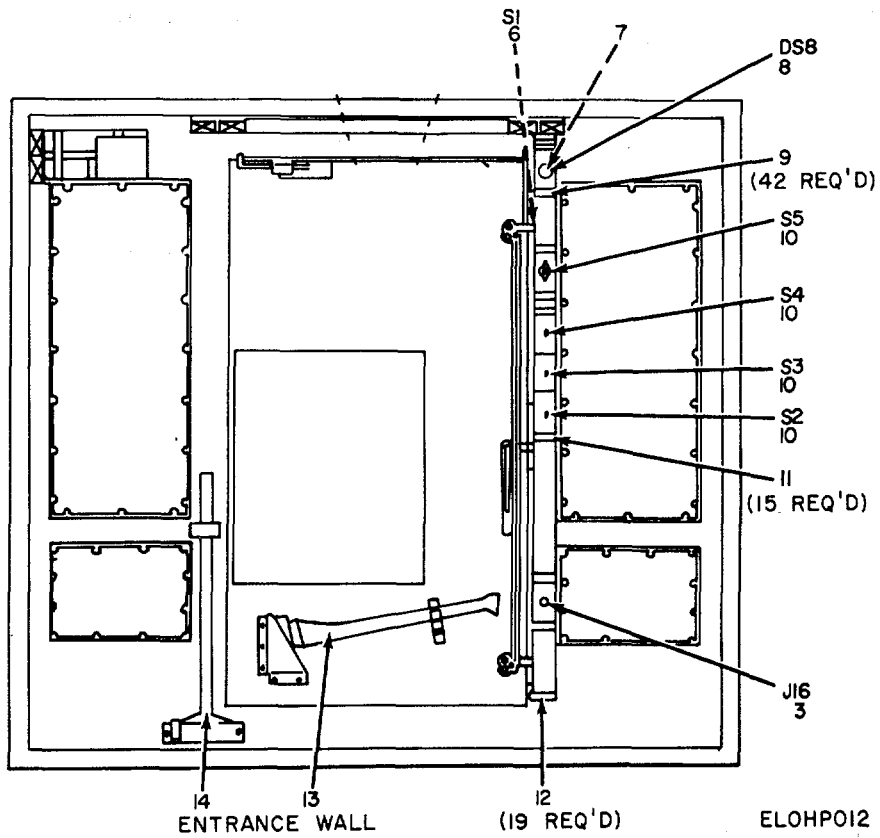
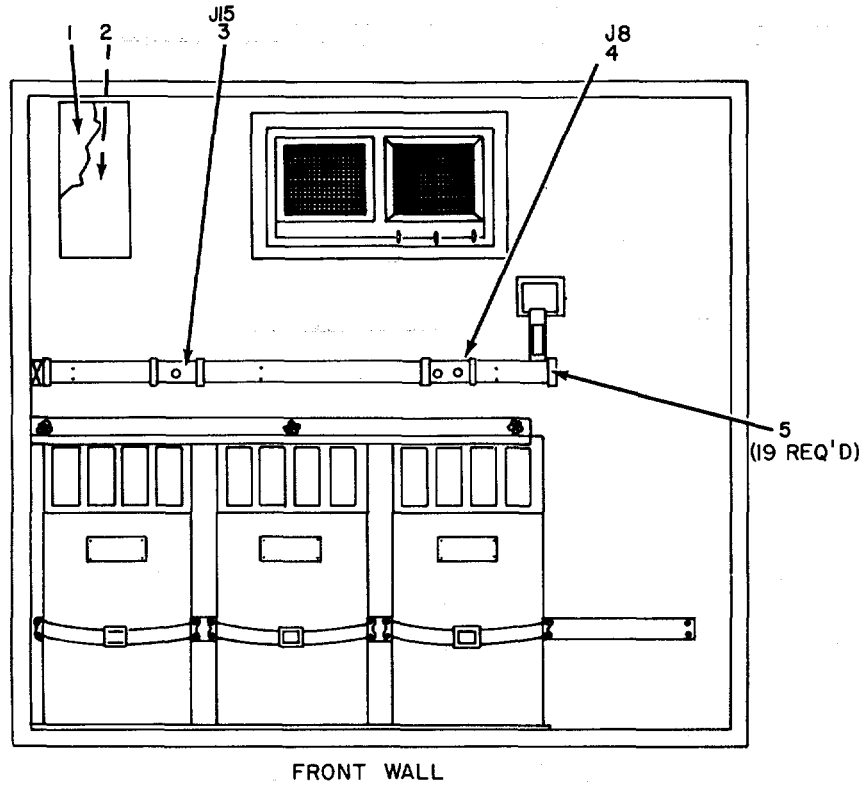
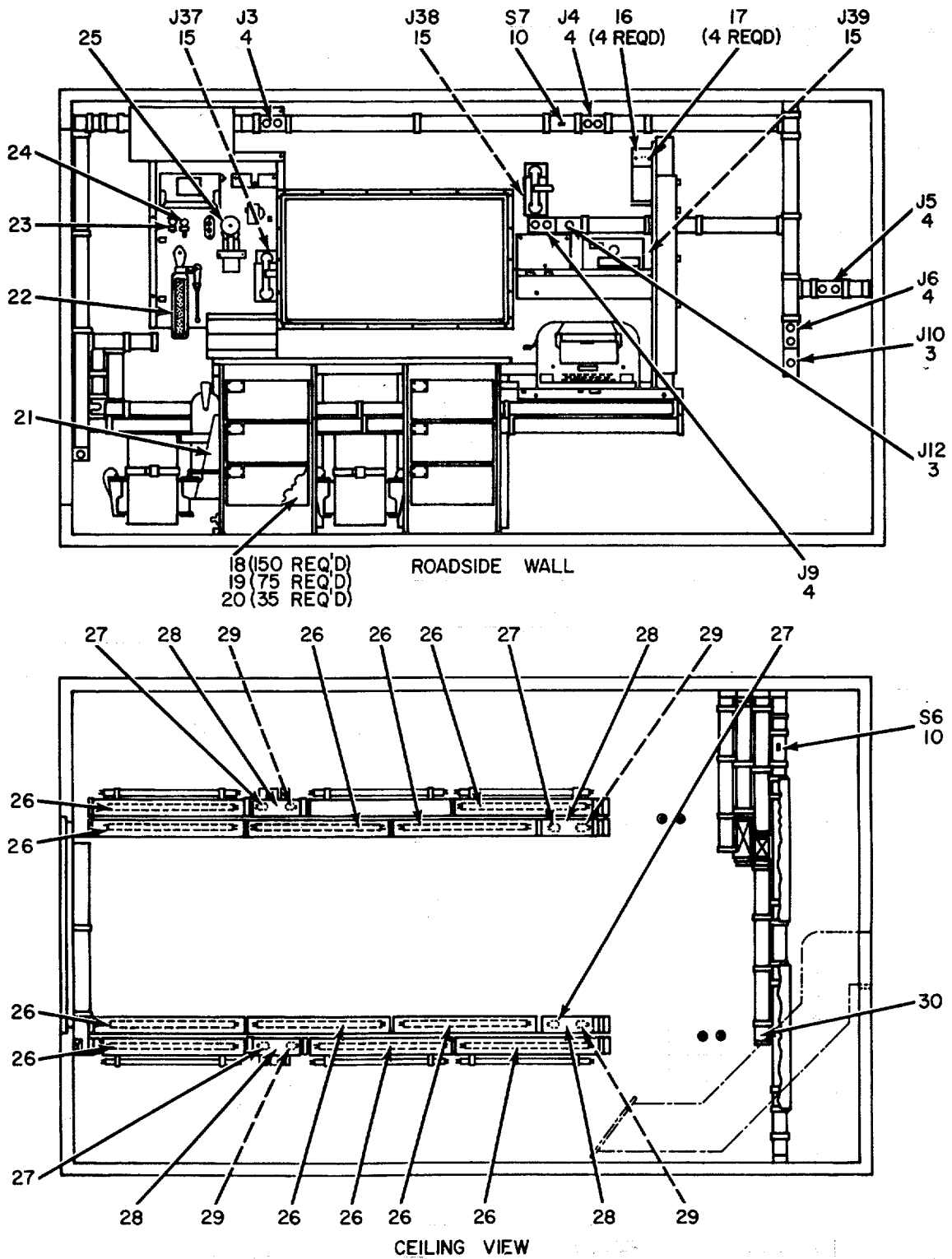


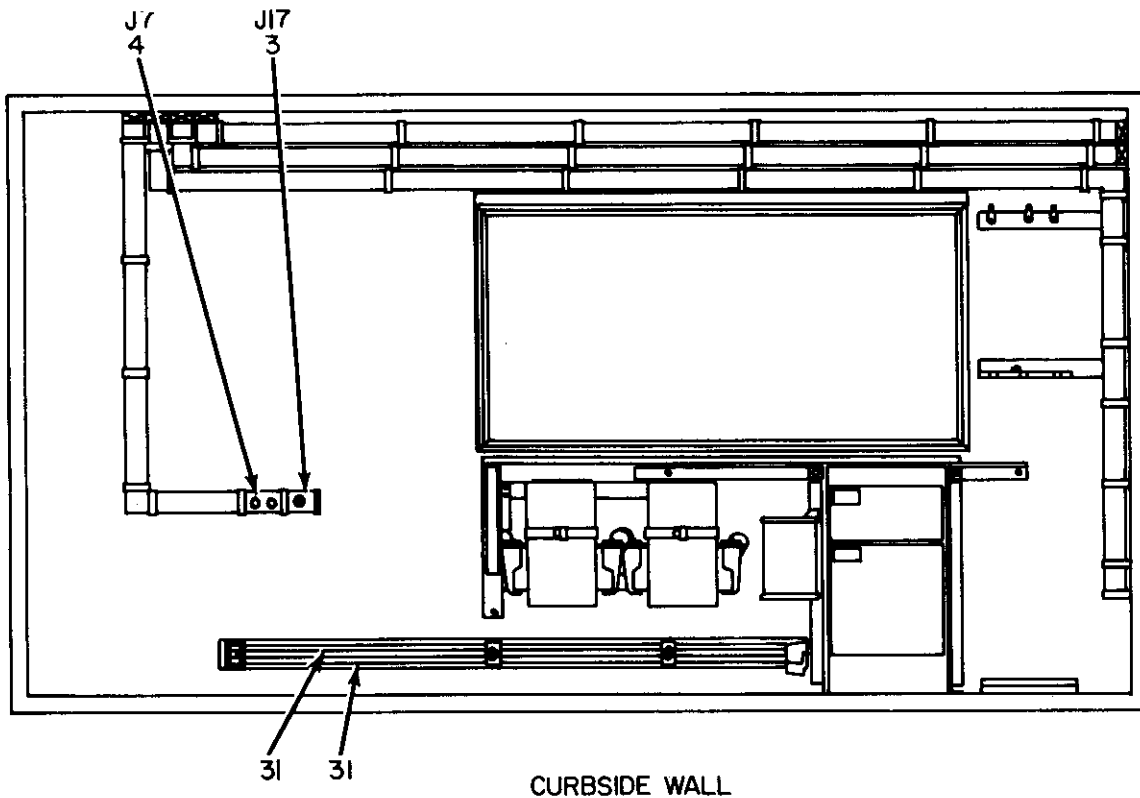
Figure 10. Panel, Patching Communications SB-675A/MSC (Sheet 1 of 4)



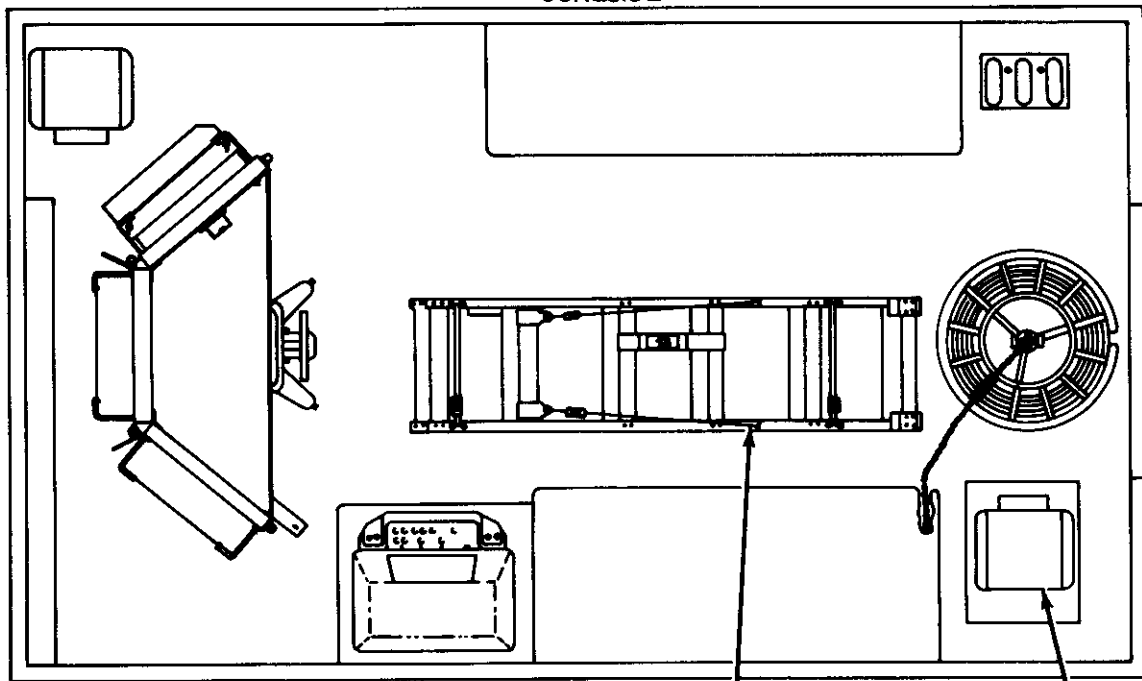
- NOTES: 1. SEE FIG. 13 FOR FLOURESCENT LIGHT DETAIL.
 2. ITEM 26 - 14 REQUIRED - 11 SHOWN.
 3. ITEMS 27 & 29 REQUIRE TOTAL QUANTITY OF 8, ONLY 4 SHOWN FOR CLARITY

ELOHPO13

Figure 10. Panel, Patching Communications SB-675A/MSC (Sheet 2 of 4)



CURBSIDE

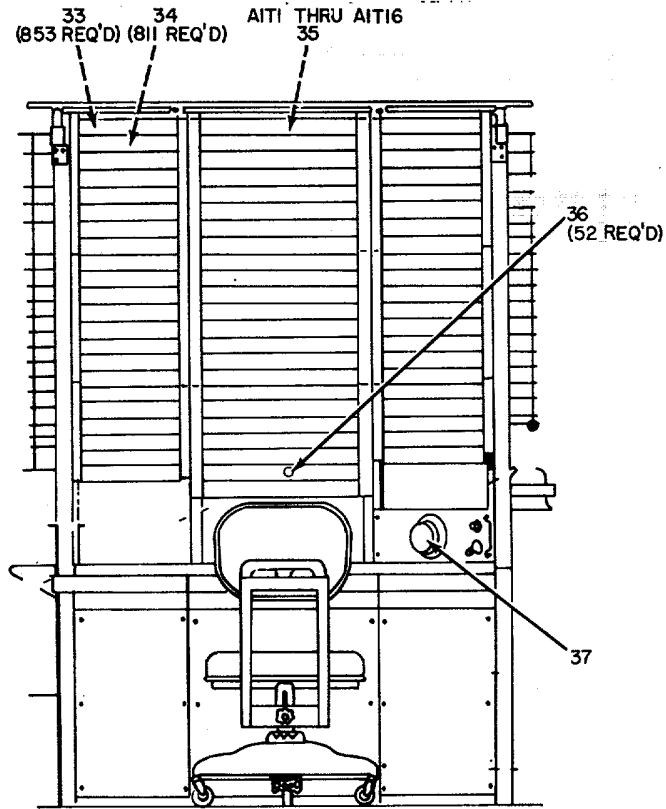


ROADSIDE
FLOOR PLAN

SEE SHEET 4
FOR DETAILS

ELOHP014

Figure 10. Panel, Patching Communications SB-675A/MSC (Sheet 3 of 4)



PATCHING PANEL SECTION

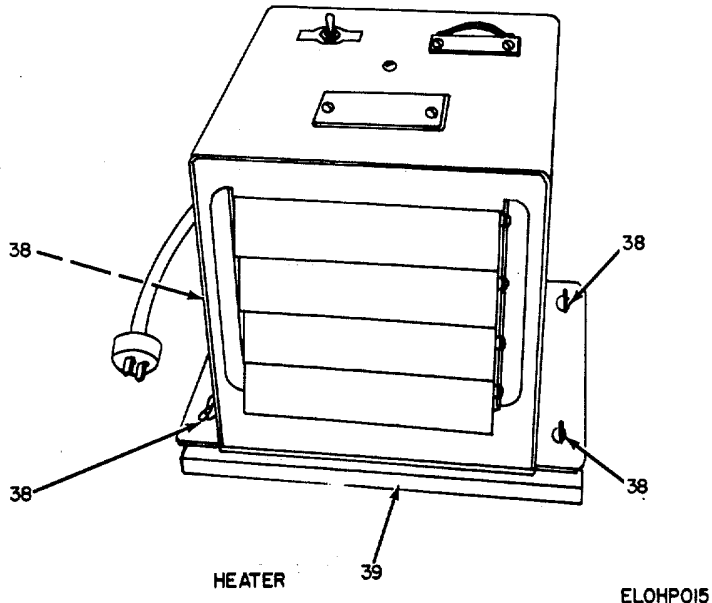


Figure 10. Panel, Patching Communications SB-675A/MSC (Sheet 4 of 4)

SECTION II

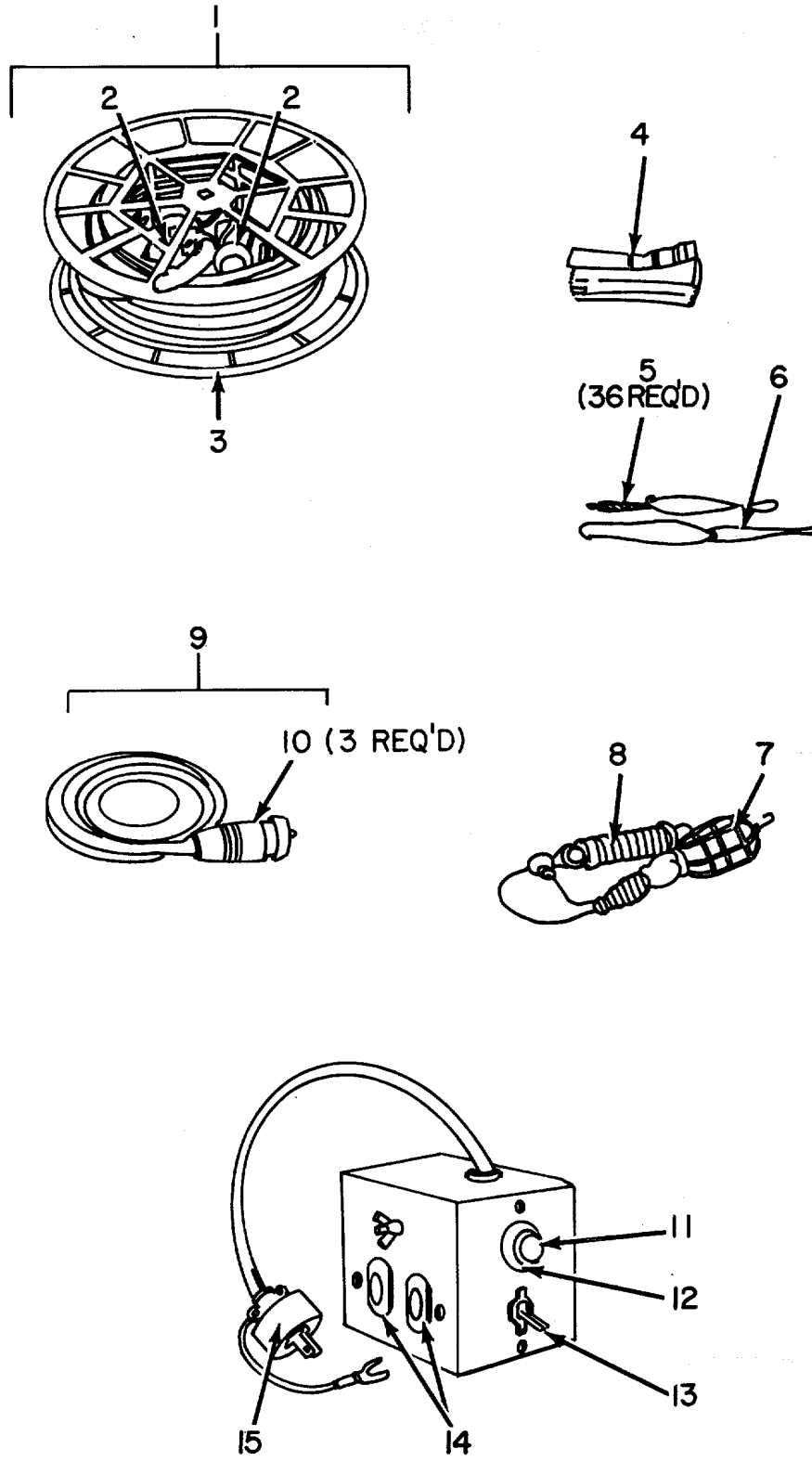
TM 11-5895-225-24P

(1) ILLUSTRATION		(2)	(3)	(4)	(5)	(6)	(7)	(8)
(a) FIG NO.	(b) ITEM NO.	SMR CODE	NATIONAL STOCK NUMBER	PART NUMBER	FSCM	DESCRIPTION USABLE ON CODE	U/M	QTY INC IN UNIT
						GROUP 00 PANEL, PATCHING CMINICATIONS SB-675AA/C.		
10	1	PAOZZ	6105-00-111-2546	SCD539615-2	80063	MOTOR,ALTERNATING CURRENT	2RA	EA 1
10	2	PAOZZ	5910-00-145-9426	382950	56289	CAPACITOR,FIXED,ELECTROLYTIC	2RA	EA 1
10	3	PAOZZ	5935-00-283-4003	WC00596D7	81348	CONNECTOR,RECEPTACLE,ELECTRICAL	2RA	EA 5
10	4	PAOZZ	5935-00-350-1834	5261	74545	CONNECTOR,RECEPTACLE,ELECTRICAL	2RA	EA 7
10	5	PAOZZ	5340-00-592-7996	N7	06229	CLIP,RETAINING	2RA	EA 19
10	6	PAOZZ	5930-00-944 1086	8Z2RQ181T	91929	SWITCH,PUSH	2RA	EA 1
10	7	PAOZZ	6250-00-299-6562	4109	74545	LAMPHOLDER	2RA	EA 1
10	8	PAOZZ	6240-00-635-9753	R2A	08108	LAMP,GLOW	2RA	EA 1
10	9	PAOZZ	5340-00-857-1424	N1	06229	CLIP,RETAINING	2RA	EA 42
10	10	XDOZZ		1101	74545	SWITCH,TOGGLE	2RA	EA 6
10	11	PAOZZ	5975-00-705-5841	N3	06229	CLIP,RETAINING	2RA	EA 15
10	12	PAOZZ	5975-00-473-5595	N5	06229	CLIP,RETAINING	2RA	EA 19
10	13	PAOZZ	5110-00-115-5049	SCC539451	80063	AXE,SINGLE BIT	2RA	EA 1
10	14	PAOZZ	5120-00-900-6096	SCC539505	80063	HAMMER,HAND	2RA	EA 1
10	15	PAOZZ	5935-00-683-2746	JJ034	81349	JACK,TELEPHONE	2RA	EA 3
10	16	PAOZZ	5999-00-283-5393	315K1433	01537	CAP,ELECTRICAL	2RA	EA 4
10	17	PAOZZ	5940-00-937-5237	PBOB8A01	81349	POST, BINDING	2RA	EA 4
10	18	PAOZZ	5935-00-642-0743	165C	64959	DUMMY PLUG,TELEPHONE	2RA	EA 150
10	19	PAOZZ	5935-00-162-6205	1650	64959	DUMMY PLUG,TELEPHONE	2RA	EA 75
10	20	PAOZZ	5935-00-775-2446	F7986	96344	DUMMY PLUG,TELEPHONE	2RA	EA 35
10	21	PAOZZ	4210-00-288-6849	R81	33525	BRACKET,FIRE EXTINGUISHER	2RA	EA 1
10	22	PAOZZ	7920-00-342-4521	SCC539469	80063	BRUSH,DUSTING BENCH	2RA	EA 1
10	23	PAOZZ	5120-00-293-2696	43M438	03487	EXTRACTOR,ELECTRON TUBE	2RA	EA 1
10	24	PAOZZ	5120-00-293-2692	13-16	81992	EXTRACTOR,ELECTRON TUBE	2RA	EA 1
10	25	PAOZZ	6230-00-729-9614	SCC539491	80063	LANTERN,ELECTRIC	2RA	EA 1
10	26	PAOZZ	6240-00-152-2996	SCC539495	80063	LAMP,FLUORESCENT	2RA	EA 14
10	27	PAOZZ	6240-00-155-8653	25T8DC115-125	08108	LAMP,INCANDESCENT	2RA	EA 8
10	28	PAOZZ	6210-00-930-1217	SCC547186	80063	SHIELD,LAMP	2RA	EA 4
10	29	PAOZZ	6250-00-995-9074	12-240	95263	LAMPHOLDER	2RA	EA 8
10	30	XDOZZ		7310	74545	CONNECTOR,RECEPTACLE,ELECTRICAL	2RA	EA 1
10	31	PAOZZ	5975-00-224-5260	MX148G	80058	ROD,GROUND	2RA	EA 2
10	32	PAOZZ	2540-00-892-6243	MX339G	80058	LADDER VEHICLE BOARDING	2RA	EA 1
10	33	PAOZZ	5935-00-234-2084	M641-2-7	81349	JACK,TELEPHONE	2RA	EA 853
10	34	PAOZZ	5935-00-192-4826	JJ086	81349	JACK,TELEPHONE	2RA	EA 811
10	35	PAOZZ	5950-00-769-0889	666144-117	12436	TRANSFORMER,HYBRID	2RA	EA 16
10	36	PAOZZ	5930-00-224-4213	JJ024	81349	JACK,TELEPHONE	2RA	EA 52
10	37	PAOZZ	6645-00-410-2395	SCC539475	80063	CLOCK,HALL	2RA	EA 1
10	38	PAOZZ	5325-00-285-6256	5W140	75618	STUD,TURNLOCK	2RA	EA 4

SECTION II

TM 11-5895-225-24P

(1) ILLUSTRATION		(2)	(3)	(4)	(5)	(6)	(7)	(8)
(a) FIG NO.	(b) ITEM NO.	SMR CODE	NATIONAL STOCK NUMBER	PART NUMBER	FSCM	DESCRIPTION <i>USABLE ON CODE</i>	U/M	QTY INC IN UNIT
10	39	PAHZZ	5365-00-838-0422	85-34-101-17	75618	RETAINER 2RA	EA	1



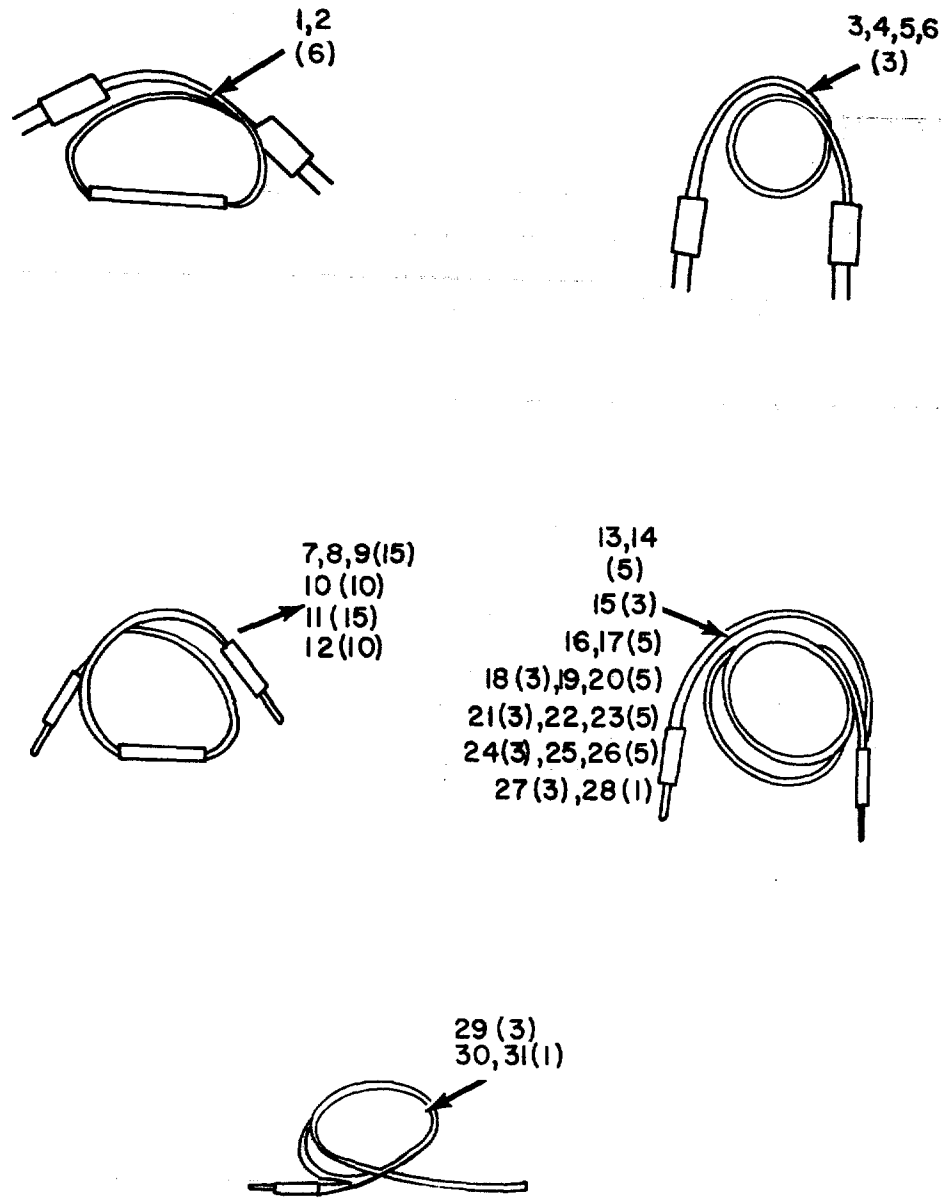
ELOHPO16

Figure 11. Panel, Patching Communications SB-675A/MSC, Miscellaneous Components.

SECTION II

TM 11-5895-225-24P

(1) ILLUSTRATION		(2)	(3)	(4)	(5)	(6)	(7)	(8)
(a) FIG NO.	(b) ITEM NO.	SMR CODE	NATIONAL STOCK NUMBER	PART NUMBER	FSCM	DESCRIPTION <i>USABLE ON CODE</i>	U/M	QTY INC IN UNIT
11	1	PAOZZ	5995-00-134-7159	CX745AU100FTAND RC435U	80058	CABLE ASSEMBLY,POWER ELECTRICAL 2RA	EA	1
11	2	PAHZZ	5935-00-134-5266	U237BG	80058	CONNECTOR,PLUG,ELECTRICAL 2RA	EA	2
11	3	PAOZZ	8130-00-656-1090	RC435U	80058	REEL,CABLE 2RA	EA	1
11	4	PAOZZ	6150-00-495-1214	SCB539492	80063	LEAD,ELECTIRICAL 2RA	EA	1
11	5	PAOZZ	5120-00-946-5148	SCB539592	80063	GRIP,CABLE,WOVEN 2RA	EA	36
11	6	PAOZZ	5120-00-946-5141	SCB539593	80063	GRIP.CABLE,WOVEN 2RA	EA	1
11	7	XDOZZ	6240-00-143-3070	M915586-2	96906	LAMP,INCANDESCENT 2RA	EA	1
11	8	PAOZZ	6230-00-115-2687	SCC539496	80063	LIGHT,EXTENSION 2RA	EA	1
11	9	PAOZZ	5995-00-935-2704	SCD543403	80063	CABLE ASSEMBLY,POWERS ELECTRICAL 2RA	EA	1
11	10	PAHZZ	5935-00-134-5266	U23718G	80058	CONNECTOR,PLUG.ELECTRICAL 2RA	EA	3
11	11	PAOZZ	6240-00-223-9100	NE51	24446	LAMP,GLOW 2RA	EA	1
11	12	PAOZZ	6210-00-087-4248	37-008-00331-245	72619	LIGHT.INDICATOR 2RA	EA	1
11	13	PAOZZ	5930-00-615-7896	MS25098-22	96906	SWITCH,TOGGLE 2RA	EA	1
11	14	PAOZZ	5935-00-199-0275	9213	74545	CONNECTOR.RECEPTACLE,ELECTRICAL 2RA	EA	1
11	15	XDOZZ		5264	74545	CONNECTOR,PLUG,ELECTRICAL 2RA	EA	1



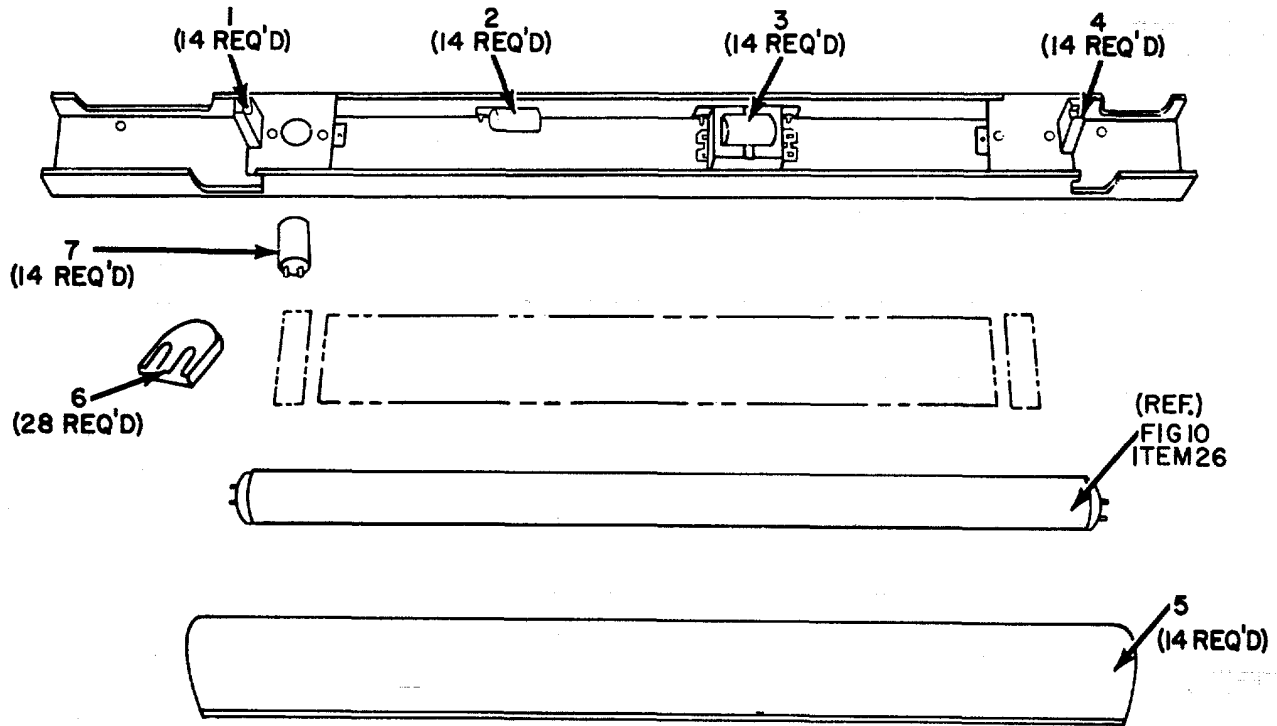
ELOHPO17

Figure 12. Panel, Patching Communications SB-675A/MSC, Cable Assemblies.

SECTION II

TM 11-5895-225-24P

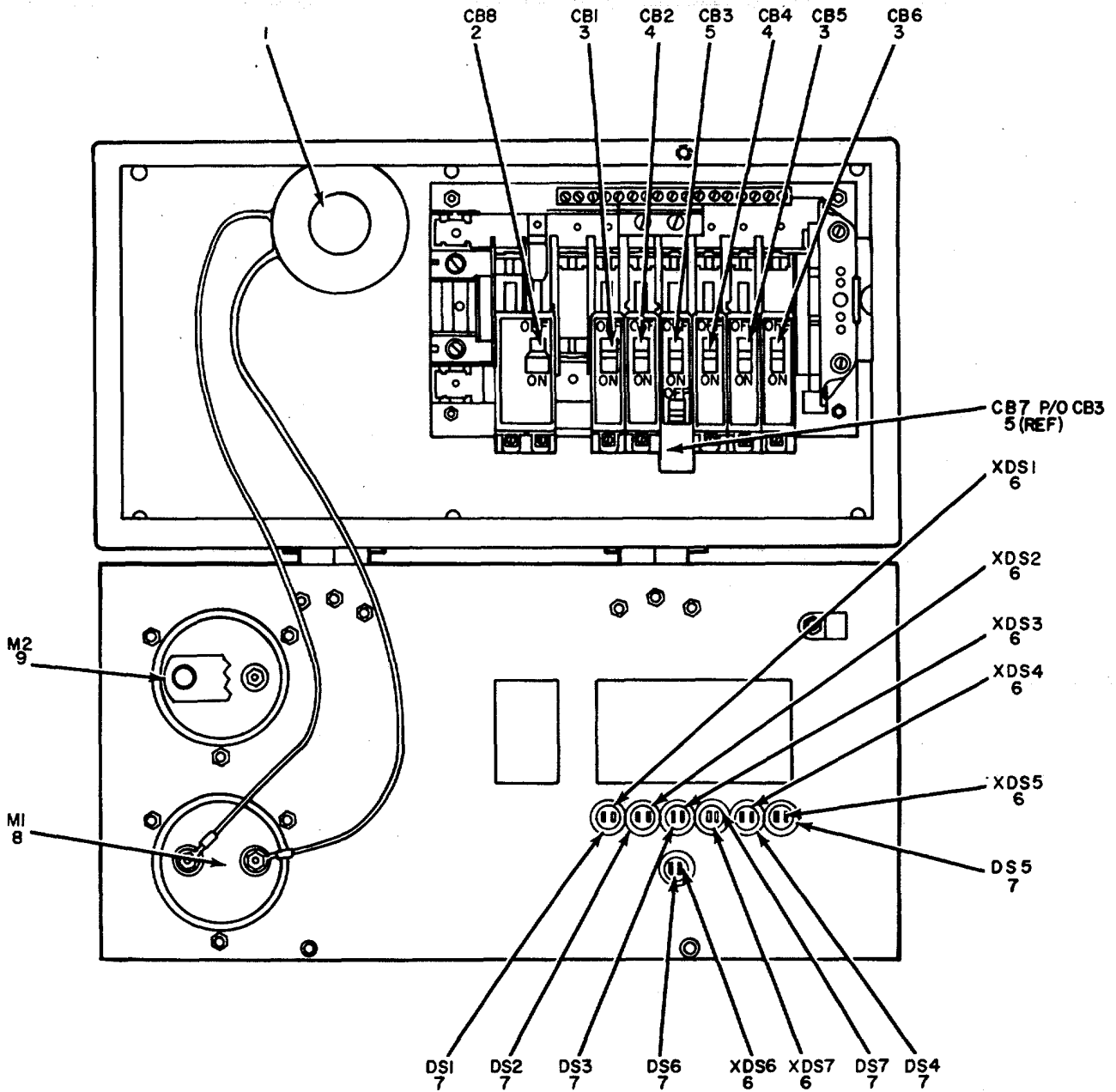
(1) ILLUSTRATION		(2) SMR CODE	(3) NATIONAL STOCK NUMBER	(4) PART NUMBER	(5) FSCM	(6) DESCRIPTION <i>USABLE ON CODE</i>	(7) U/M	(8) QTY INC IN UNIT	
(a) FIG NO.	(b) ITEM NO.								
12	1	PAOZZ	5995-00-752-2586	SM0352620GP3	80063	CORD ASSEMBLY,ELECTRICAL	2RA	EA	6
12	2	PAOZZ	5995-00-752-2587	SMD352619GR2	80063	CORD ASSEMBLY,ELECTRICAL	2RA	EA	6
12	3	PAOZZ	5995-00-752-2585	SMD352617GR2	80063	CORD ASSEMBLY,ELECTRICAL	2RA	EA	3
12	4	PAOZZ	5995-00-752-2590	SMD352617GRP3	80063	CORD ASSEMBLY,ELECTRICAL	2RA	EA	3
12	5	PAOZZ	5995-00-752-2589	SMD3526186P2	80063	CORD ASSEMBLY,ELECTRICAL	2RA	EA	3
12	6	PAOZZ	5995-00-752-2586	666148-266	12436	CORD ASSEMBLY,ELECTRICAL	2RA	EA	3
12	7	XDOZZ		SMD3525990R3	80063	CABLE ASSEMBLY,TELEPHONE	2RA	EA	15
12	8	PAOZZ	5995-00-752-2498	SMD0352598-3	80063	CABLE ASSEMBLY,TELEPHONE	2RA	EA	15
12	9	XDOZZ	5995-00-752-2496	66148-233	12436	CABLE ASSEMBLY,ELECTRICAL	2RA	EA	15
12	10	PAOZZ	5995-00-752-2601	SMD352598	80063	CABLE ASSEMBLY,ELECTRICAL	2RA	EA	10
12	11	PAOZZ	6995-00-752-2495	SMD352599	80063	CABLE ASSEMBLY,TELEPHONE	2RA	EA	15
12	12	PAOZZ	5995-00-752-2600	666148-239	12436	CABLE ASSEMBLY,TELEPHONE	2RA	EA	10
12	13	PAOZZ	5995-00-752-2516	SMD352593-3	80063	CABLE ASSEMBLY,TELEPHONE	2RA	EA	5
12	14	PAOZZ	5995-00-752-2497	SMD352593PIV	80063	CABLE ASSEMBLY,TELEPHONE	2RA	EA	5
12	15	PAOZZ	5995-00-752-2514	SMD352593-5	80063	CABLE ASSEMBLY,TELEPHONE	2RA	EA	3
12	16	PAOZZ	5995-00-752-2515	SMD352594-3	80063	CABLE ASSEMBLY,TELEPHONE	2RA	EA	5
12	17	PAOZZ	6995-00-752-2549	SMD352594-4	80063	CABLE ASSEMBLY,TELEPHONE	2RA	EA	5
12	18	PAOZZ	6995-00-752-2513	SMD352594-5	80063	CABLE ASSEMBLY,TELEPHONE	2RA	EA	3
12	19	PAOZZ	5995-00-752-2594	SMD3525956BGR3	80063	CABLE ASSEMBLY,TELEPHONE	2RA	EA	5
12	20	PAOZZ	5995-00-752-2595	SMD3525956RP4	80063	CABLE ASSEMBLY,TELEPHONE	2RA	EA	5
12	21	XDOZZ		SMD35625956RS	80063	CABLE ASSEMBLY,TELEPHONE	2RA	EA	3
12	22	PAOZZ	5995-00-752-2593	SMD352596GRIII	80063	CABLE ASSEMBLY,TELEPHONE	2RA	EA	5
12	23	PAOZZ	5995-00-752-2592	SMD3525966RP4	80063	CABLE ASSEMBLY,TELEPHONE	2RA	EA	5
12	24	PAOZZ	5995-00-752-2591	666148-224	12436	CABLE ASSEMBLY,TELEPHONE	2RA	EA	3
12	25	PAOZZ	5995-00-752-2597	SMD352597GR3	80063	CABLE ASSEMBLY,TELEPHONE	2RA	EA	5
12	26	XDOZZ		SMD352597GR4	80063	CABLE ASSEMBLY,TELEPHONE	2RA	EA	5
12	27	PAOZZ	5995-00-752-2599	666146-229	12436	CABLE ASSEMBLY,TELEPHONE	2RA	EA	3
12	28	PAOZZ	5995-00-889-0867	SMD383873GP8	80063	CABLE ASSEMBLY,TELEPHONE	2RA	EA	1
12	29	PAOZZ	5995-00-752-2566	SMD3838730P3	80063	CABLE ASSEMBLY,TELEPHONE	2RA	EA	3
12	30	PAOZZ	5995-00-823-3016	SMD384145	80063	CABLE ASSEMBLY,TELEPHONE	2RA	EA	2



ELOHPO18

Figure 13. Panel, Patching Communications SB-675A/MSC, Fluorescent Light.

(1) ILLUSTRATION		(2)	(3)	(4)	(5)	(6)	(7)	(8)
(a) FIG NO.	(b) ITEM NO.	SMR CODE	NATIONAL STOCK NUMBER	PART NUMBER	FSCM	DESCRIPTION USABLE ON CODE	U/M	QTY INC IN UNIT
13	1	PAOZZ	6250-00-227-0317	78X736N	04314	LAMPHOLDER 2RA	EA	14
13	2	PAOZZ	5915-00-116-8916	591B	02777	FILTER, RADIO INTERFERENCE 2RA	EA	14
13	3	PAOZZ	6250-00-804-3449	89G457	08595	LAMP, BALLAST 2RA	EA	14
13	4	PAOZZ	6250-00-175-2559	78X491	41326	LAMPHOLDER 2RA	EA	14
13	5	PAOZZ	6210-00-921-6682	SCC539466	80063	SHIELD, LAMP 2RA	EA	14
13	6	PAOZZ	6210-00-757-9694	P40	19634	LOCK, FLUORESCENT 2RA	EA	28
13	7	PAOZZ	6250-00-194-4794	SCB539504	80063	STARTER, FLUORESCENT 2RA	EA	14



ELOHPO19

Figure 14. Panel, Patching Communications SB-675A/MSC, Power Distribution Panel.

SECTION II

TM 11-5895-225-24P

(1) ILLUSTRATION		(2)	(3)	(4)	(5)	(6)	(7)	(8)
(a) FIG NO.	(b) ITEM NO.	SMR CODE	NATIONAL STOCK NUMBER	PART NUMBER	FSCM	DESCRIPTION <i>USABLE ON CODE</i>	U/M	QTY INC IN UNIT
14	1	PAOZZ	5950-00-892-8208	3CT11B	93993	TRANSFORMER, CURRENT 2RA	EA	1
14	2	PAOZZ	5925-00-785-9531	Q0-260	90211	CIRCUIT BREAKER 2RA	EA	1
14	3	PAOZZ	5925-00-818-4811	Q0-115	81487	CIRCUIT REAKER 2RA	EA	3
14	4	PAOZZ	5925-00-583-7941	Q0120	88753	CIRCUIT BREAKER 2RA	EA	2
14	5	PAOZZ	5925-00-011-2540	Q02020	56365	CIRCUIT BREAKER 2RA	EA	1
14	6	PAOZZ	6210-00-087-4248	37-0408-0331-245	72619	LIGHT, INDICATOR 2RA	EA	7
14	7	PAOZZ	6240-00-223-9100	NE51	08108	LAMP, GLOW 2RA	EA	7
14	8	PAOZZ	6625-00-752-8464	MR36WI00ACAAR	81349	AMMETER 2RA	EA	1
14	9	PAOZZ	6625-00-669-5019	MR363150ACVV	81349	VOLTMETER 2RA	EA	1

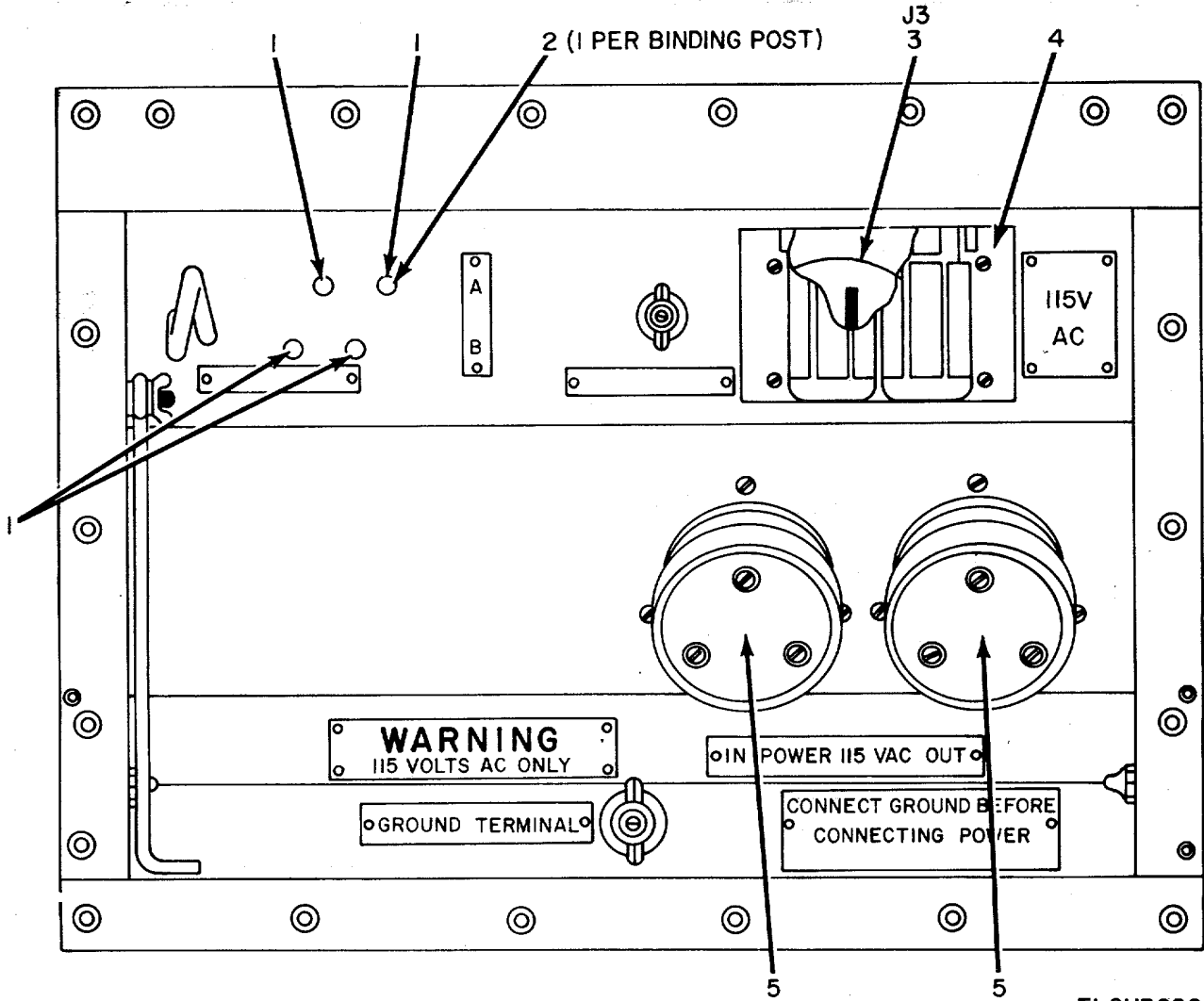
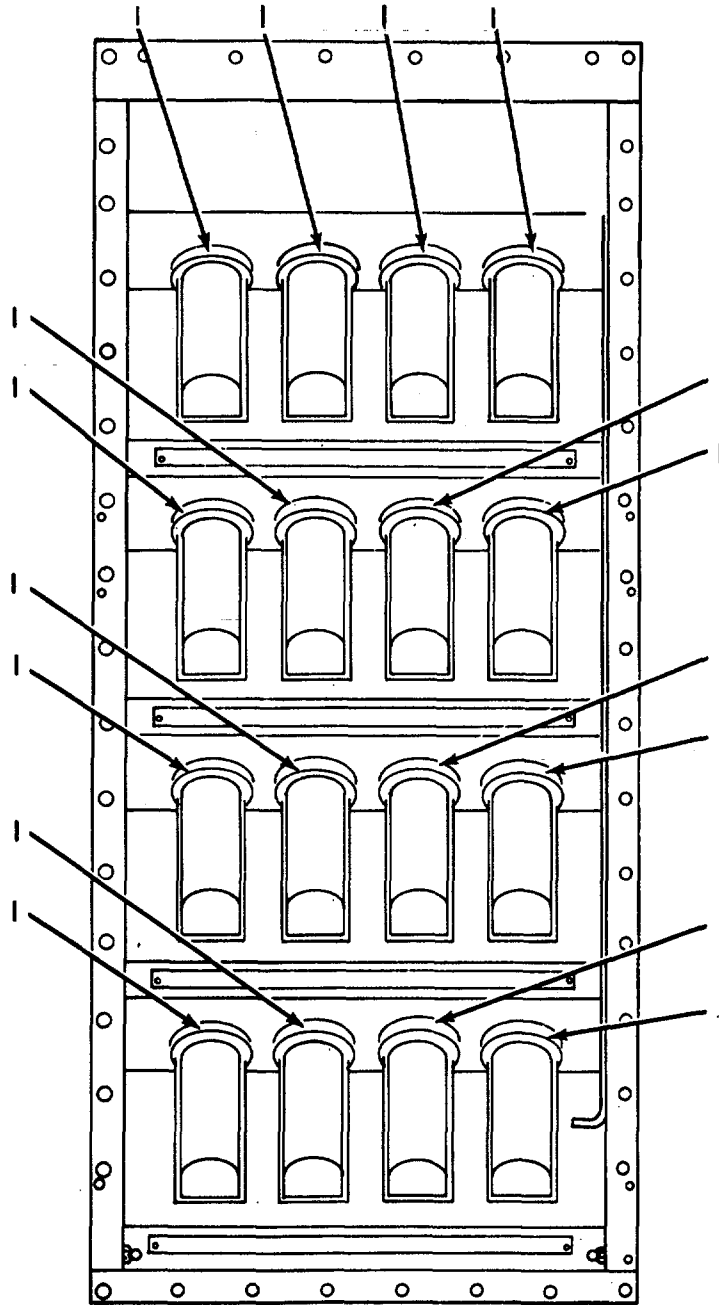


Figure 15. Panel, Patching Communications SB-675A/MSC, Power Entrance Box.

(1) ILLUSTRATION		(2)	(3)	(4)	(5)	(6)	(7)	(8)
(a) FIG NO.	(b) ITEM NO.	SMR CODE	NATIONAL STOCK NUMBER	PART NUMBER	FSCM	DESCRIPTION USABLE ON CODE	U/M	QTY INC IN UNIT
15	1	PAOZZ	5999-00-283-5393	315K43	01537	POST, BINDING 2RA	EA	4
15	2	PAOZZ	5970-00-869-6263	SCC76202-1	80058	CAP, ELECTRICAL 2RA	EA	4
15	3	PAOZZ	5935-00-283-4003	WC00596D7	74545	CONNECTOR, RECEPTACLE, ELECTRICAL 2RA	EA	1
15	4	PAOZZ	5975-00-947-3068	M3780FS	21873	COVER, CONNECTOR, RECEPTACLE 2RA	EA	1
15	5	PAOZZ	5935-00-064-5732	D10099	04926	CONNECTOR, RECEPTACLE, ELECTRICAL 2RA	EA	2

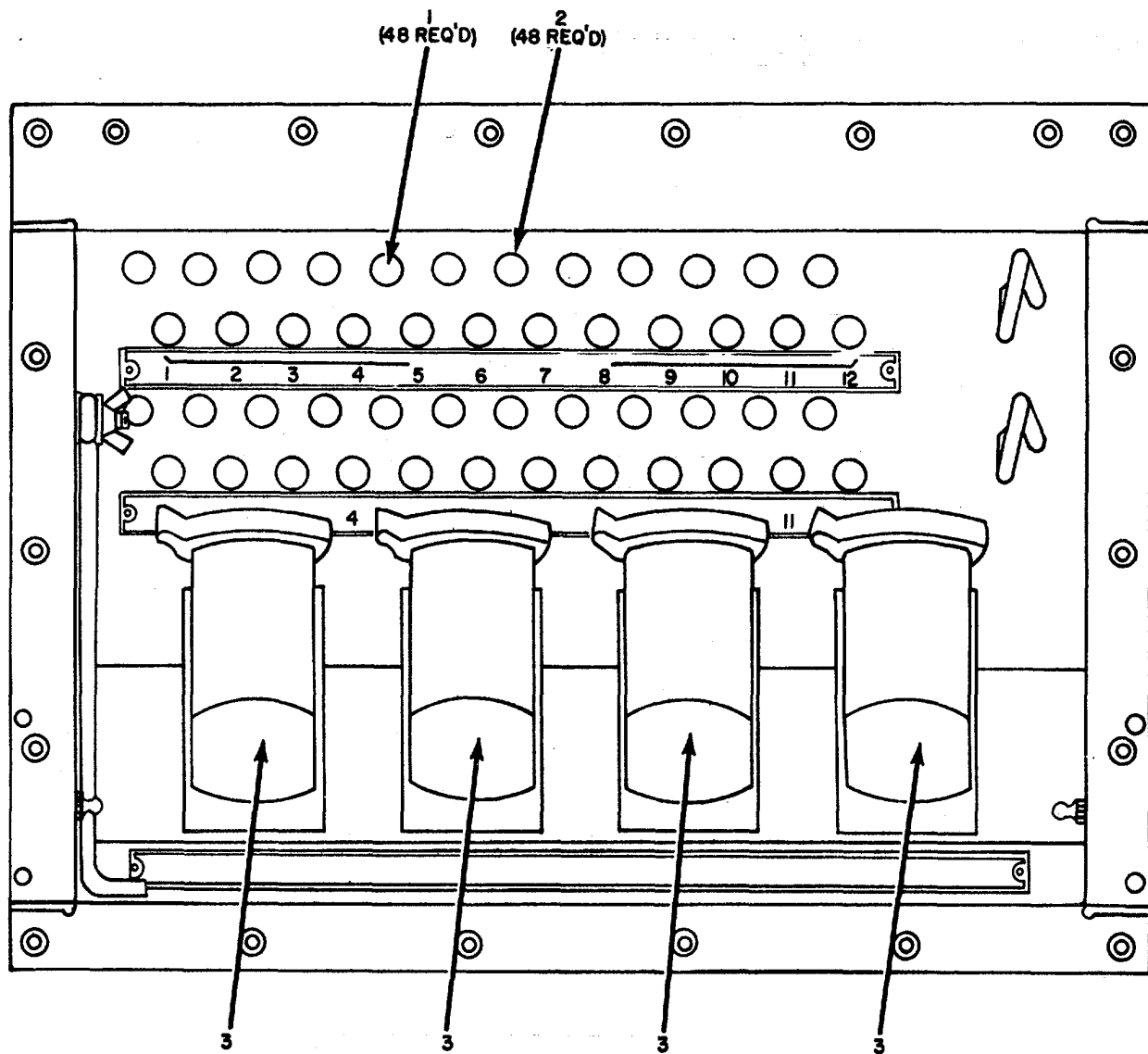


NOTE: ITEM 1 HAS 32 REQ'D-16 PER SIGNAL ENTRANCE BOX.

ELOHP021

Figure 16. Panel, Patching Communications SB-675A/MSC, Signal Entrance Box.

(1) ILLUSTRATION		(2)	(3)	(4)	(5)	(6)	(7)	(8)
(a) FIG NO.	(b) ITEM NO.	SMR CODE	NATIONAL STOCK NUMBER	PART NUMBER	FSCM	DESCRIPTION USABLE ON CODE	U/M	QTY INC IN UNIT
16	1	PAFZZ	593500045-9832	U187AG	80058	CONNECTOR.RECEPTACLE.ELECTRICAL 2RA	EA	48



ELOHP022

Figure 17. Panel, Patching Communications SB-675A/MSC, Signal Entrance Box, (Binding Posts and Connectors SIG 33 IN through SIG Out) Cover Removed

(1) ILLUSTRATION		(2)	(3)	(4)	(5)	(6)	(7)	(8)
(a) FIG NO.	(b) ITEM NO.	SMR CODE	NATIONAL STOCK NUMBER	PART NUMBER	FSCM	DESCRIPTION USABLE ON CODE	U/M	QTY INC IN UNIT
17	1	PAFZZ	5970-00-B69-6263	SCC76202-1	80063	CAP, ELECTRICAL 2RA	EA	40
17	2	PAFZZ	5940-00-937-5237	PB08NA01	81349	POST, BINDING 2RA	EA	48
17	3	PAFZZ	5935-00-045-9832	UI87AG	80058	CONNECTOR, RECEPTACLE, ELECTRICAL 2RA	EA	4

NOTE: LATEST NATIONAL STOCK NUMBER AND PART NUMBER ASSIGNMENTS ARE INCLUDE AT END OF INDEX.

STOCK NUMBER	FIGURE NO.	ITEM NO.	STOCK NUMBER	FIGURE NO.	ITEM NO.
5930-00-034-2386	1	28	5935-00-683-2746	10	15
5935-00-045-9830	2	11	6210-00-686-5568	4	5
5935-00-045-9832	8	1	5975-00-705-5841	1	22
5935-00-045-9832	17	3	5975-00-705-5841	10	11
5935-00-064-5731	2	13	5950-00-705-9105	6	2
5935-00-064-5732	7	1	5910-00-713-8313	5	1
6210-00-087-4248	11	12	4210-00-727-8111	1	15
6210-00-081-4248	14	6	6230-00-729-9614	5	6
6250-00-109-1091	1	10	6230-00-729-9614	10	25
6105-00-111-2546	10	1	5995-00-752-1346	3	29
6230-00-115-2687	2	8	4940-00-752-2474	2	2
6230-00-115-2687	11	8	5995-00-752-2495	3	9
5110-00-115-5049	10	13	5995-00-752-2496	3	8
5915-00-116-8916	13	2	5995-00-752-2498	3	7
5935-00-134-5266	11	2	5995-00-752-2499	3	11
5935-00-134-5266	11	10	5995-00-752-2513	3	18
6240-00-143-3070	5	5	5995-00-752-2514	3	15
5910-00-145-9426	10	2	5995-00-752-2515	3	16
5935-00-149-3985	5	2	5995-00-752-2516	3	13
6240-00-152-2996	10	6	4940-00-752-2525	2	3
6240-00-155-7786	5	7	5995-00-752-2549	3	17
5935-00-162-6285	10	19	5995-00-752-2566	3	28
6250-00-175-2559	13	4	5995-00-752-2585	3	3
7920-00-178-8315	1	17	5995-00-752-2585	12	3
6240-00-179-1814	1	29	5995-00-752-2586	3	2
6240-00-179-1814	6	5	5995-00-752-2587	3	1
5935-00-192-4826	1	2	5995-00-752-2587	12	2
5935-00-192-4826	10	34	5995-00-752-2589	3	4
6250-00-194-4794	13	7	5995-00-752-2590	3	6
5935-00-199-0275	1	4	5995-00-752-2592	3	23
6240-00-223-9100	11	11	5995-00-752-2594	3	19
5935-00-224-4213	1	5	5995-00-752-2595	3	20
5935-00-224-4213	10	36	5995-00-752-2596	3	21
5975-00-224-5260	1	18	5995-00-752-2597	3	25
5975-00-224-5260	10	31	5995-00-752-2597	12	25
5935-00-228-4038	1	1	5995-00-752-2598	3	26
5120-00-251-4489	1	21	5995-00-752-2599	3	27
5935-00-283-4003	1	20	5995-00-752-2601	3	10
5935-00-283-4003	7	2	6210-00-754-8134	4	5
5935-00-283-4003	10	3	6210-00-757-9694	13	6
5935-00-283-4003	15	3	5950-00-769-0889	1	3
			5935-00-775-2446	10	20
4210-00-288-6849	10	21	5120-00-776-9917	2	4
5110-00-293-2339	1	15	5120-00-776-9918	2	5
5120-00-293-2696	1	32	5410-00-792-6335	1	24
6250-00-299-2884	4	6	5410-00-792-6336	1	25
6240-00-299-5876	1	9	7230-00-792-6339	1	7
6250-00-299-6562	10	7	5410-00-792-6341	1	8
6645-00-303-4950	1	6	6105-00-792-8384	5	4
7920-00-342-4521	10	22	6645-00-800-7094	1	6
5935-00-350-1834	1	4	6250-00-804-3449	4	3
5935-00-350-1834	10	4	5925-00-818-4811	6	7
5935-00-359-6025	1	19	5925-00-818-4811	14	3
6645-00-410-2395	10	37	5995-00-823-3016	3	31
5975-00-473-5595	10	12	5340-00-857-1424	10	9
6150-00-495-1214	11	4	5970-00-869-6263	9	1
5120-00-508-0584	1	33	5970-00-869-6263	15	2
6240-00-538-8447	1	34	5995-00-889-0608	3	30
6625-00-542-1897	6	1	1560-00-889-1500	2	12
			2540-00-892-6243	1	26
			2540-00-892-6243	10	32
			5950-00-892-8208	14	1
5910-00-553-6096	4	2	5120-00-900-6096	10	14
5355-00-570-5562	2	10	6210-00-921-6682	4	5
5340-00-592-7996	2	9	6210-00-921-6682	13	5
5340-00-592-7996	10	5	6210-00-930-1217	10	28
4210-00-595-4085	1	16	5930-00-944-1086	10	6
5930-00-615-7896	1	30	5120-00-946-5114	11	6
5935-00-642-0743	10	18	5120-00-946-5148	11	5
8130-00-656-1090	2	1	5975-00-947-3068	15	4
8130-00-656-1090	11	3	5930-00-959-3441	1	11
5935-00-683-2746	1	27	6105-00-999-4814	5	4

PART NUMBER	FSCM	FIG. NO.	ITEM NO.	PART NUMBER	FSCM	FIG. NO.	ITEM NO.
A8265M1	72560	5	4				
BZ2RQB18P4	91929	1	11	CX7453AU	80058	11	1
BZ2RQ181T	91929	10	6	CX7705U	80058	2	6

PART NUMBER	FSCM	FIG. NO.	ITEM NO.	PART NUMBER	FSCM	FIG. NO.	ITEM NO.
E0A265	95344	2	5	SCD539649	80063	1	17
EQA68P	95344	2	4	SMB184158	80063	2	10
FS2	71183	4	6	SMB335531	80063	4	5
F20T12/CW	24455	1	34	SMB352166	80058	2	3
F3036	24446	1	23	SMB542412	80063	1	24
F7986	96344	10	20	SMC349983	80063	4	5
GGGH86	81349	1	21	SMC352521GR1	80063	1	7
JJ024	81349	1	5	SMC352521GR2	80063	1	8
JJ024	81349	10	36	SMD350016	80063	1	3
JJ034	81349	1	27	SMD350987G	80063	2	2
JJ034	81349	10	15	SMD352593BGR3	80063	3	13
JJ085	81349	1	1	SMD352593GR5	80063	3	15
JJ086	81349	1	2	SMD352594BGR3	80063	3	16
JJ086	81349	10	34	SMD352594BGR4	80063	3	17
				SMD352594BGR5	80063	3	18
MILC7939A	81349	1	6	SM0352595BGR3	80063	3	19
				SMD352595BGR4	80063	3	20
MR36W100ACAAR	81349	14	8	SMD3525958GR5	80063	3	21
				SMD352595GR5	80063	3	21
				SMD352596BGR4	80063	3	23
				SMD352597BGR3	80063	3	25
MS25098-22	81349	1	30	SMD3525978GR4	80063	3	26
MS25098-22	96906	11	13	SMD352597BGR5	80063	3	27
MX148/G	80058	1	18	SMD352597GR3	80063	12	25
MX148G	80058	10	31	SMD352597GR4	80063	12	26
MX3391/G	80058	1	26				
MX3391G	80058	10	32	SMD352598AGR3	80063	3	7
M3780FS	21873	15	4	SMD352598AGR4	80063	3	8
				SMD352598AGR5	80063	3	10
NE34	80058	1	9	SMD352599AGR4	80063	3	9
NE45	80058	1	29	SMD352599AGR4	80063	3	11
NE45	80058	6	5	SMD352599GR3	80063	12	7
NE51	24446	11	11				
NE51	08108	14	7	SMD352617AGR2	80063	3	3
N1	06229	10	9	SMD352617AGR3	80063	3	6
N3	06229	1	22	SMD352617GR2	80063	12	3
N3	06229	10	11	SMD352618GR2	80063	3	4
N5	06229	10	12	SMD352619AGR2	80063	3	1
N7	06229	2	9	SMD352619GR2	80063	12	2
N7	06229	10	5	SMD352620AGR3	80063	3	2
P/N705	81902	1	25	SMD383873GR3	80063	3	28
PA1002	71590	1	28	SMD383873GR5	80063	3	29
PR2	08108	5	7	SMD384145GR1	80063	3	31
P150F83	00656	5	1	SMD384145GR2	80063	3	30
P40	19634	13	6	SMD384145GR2	80063	12	31
P823J	81091	1	10				
Q0-115	81487	14	3				
Q0-115	81487	6	7				
Q0-120	88753	6	6				
Q0-250	04809	6	3	U1858/G	81349	2	11
Q0-260	90217	14	2				
Q0120	88753	14	4	U187AG	80058	17	3
Q02020	56365	14	5	U187AG	80058	16	1
RB1	33525	10	21	U237B/G	81349	2	13
RC435/U	80058	2	1	U237BG	80058	11	2
RC435U	80058	11	3	U237BG	80058	11	10
SCB8539492	80063	11	4	U237BG	80058	2	7
SCB539504	80063	13	7	U238B/G	81349	7	1
SCB539547	80063	10	23	U238BU	81349	15	5
SCB539592	80063	11	5	1101	74545	10	10
SCB539593	80063	11	6	12-240	95263	10	29
				165C	64959	10	18
				165D	64959	10	19
SCC539451	80063	10	13	2106-7	32572	5	6
SCC539466	80063	4	5	23396-01	82877	5	4
SCC539466	80063	13	5				
SCC539468	80063	1	16				
SCC539469	80063	10	22	276	02461	1	15
SCC539475	80063	1	6	3CT11B	93993	14	1
SCC539475	80063	10	37	3CT35B	93993	6	2
SCC539491	80063	10	25	3S2950	56289	10	2
SCC539495	80063	10	26	37-0408-0331-245	72619	11	12
SCC539496	80063	2	8	37-0408-0331-245	72619	14	6
SCC539496	80063	11	8	4-12-18	95263	1	31
SCC539505	80063	10	14	4-12-18	95263	6	4
SCC539541	80063	1	15	4-74-6	95263	1	31
SCC547186	80063	10	28	4-74-6	95263	6	4
SCC76202-1	80058	15	2	4109	74545	10	7
SCC76202-1	80063	17	1				
SCC76202-1	80063	9	1	5261	74545	1	4
SCD539615-2	80063	10	1	5261	74545	10	4

PART NUMBER	FSCM	FIG. NO.	ITEM NO.	PART NUMBER	FSCM	FIG. NO.	ITEM NO.
				78X491	41326	13	4
				85-34-101-17	75618	10	39
				9113	95344	1	33
5264	74545	11	15	9200	66127	1	20
5521-1	03497	1	12	9200	66127	7	2
7113	95344	1	32	9210	74545	1	19
7210B	74545	1	13	9213	74545	11	14
7310B	74545	10	30	9213	74545	1	4
				9754	74545	5	2

LATEST NATIONAL STOCK NUMBER ASSIGNMENTS

STOCK NUMBER	FIGURE NO.	ITEM NO.	STOCK NUMBER	FIGURE NO.	ITEM NO.
5935-00-045-9832	16	1	5995-00-752-2514	3	14
5935-00-064-5732	15	5	5995-00-752-2514	12	15
6250-00-079-9888	1	31	5995-00-752-2515	12	16
6250-00-079-9888	6	4	5995-00-752-2516	12	13
5935-00-134-5266	2	7	5995-00-752-2549	12	17
6240-00-143-3070	11	7	5995-00-752-2566	12	29
6240-00-155-8653	10	27	5995-00-752-2586	12	1
6250-00-174-4684	4	1	5995-00-752-2588	3	5
6240-00-175-2559	4	4	5995-00-752-2588	12	6
5935-00-199-0275	11	14	5995-00-752-2589	12	5
6240-00-223-9100	14	7	5995-00-752-2590	12	4
6250-00-227-0317	13	1	5995-00-752-2591	12	24
5935-00-234-2084	10	33	5995-00-752-2592	12	23
			5995-00-752-2593	12	22
5325-00-285-6256	10	38	5995-00-752-2594	3	22
5120-00-293-2692	10	24	5995-00-752-2594	12	19
5120-00-293-2696	10	23	5995-00-752-2595	12	20
			5999-00-752-2599	3	24
			5995-00-752-2599	12	27
4210-00-383-7127	1	14	5995-00-752-2600	12	12
6105-00-561-6321	5	4	5995-00-752-2601	12	10
5925-00-583-7941	6	6	6625-00-752-8464	14	8
5925-00-583-7941	14	4	5950-00-769-0889	10	35
5930-00-615-7896	11	13	5925-00-785-9531	14	2
6240-00-635-9753	10	8	6105-00-792-8384	5	4
5930-00-644-6730	1	23	4140-00-792-8395	5	3
5935-00-644-8597	1	20	6250-00-804-3449	13	3
5935-00-644-8597	7	2	5995-00-823-3016	12	30
5925-00-703-6084	6	3	5366-00-838-0422	10	39
6250-00-752-1233	1	31	5930-00-865-6101	1	12
6250-00-752-1233	6	4	5970-00-869-6263	17	1
5995-00-752-2495	3	12	5995-00-889-0867	12	28
5995-00-752-2495	12	11	5955-00-889-1500	11	1
5995-00-752-2496	12	9	5995-00-935-2704	11	9
5995-00-752-2497	12	14	6645-00-950-8599	1	6
5995-00-752-2498	12	8	6250-00-995-9074	10	29
5995-00-752-2513	12	18			

LATEST PART NUMBER ASSIGNMENTS

PART NUMBER	FSCM	FIG. NO.	ITEM NO.	PART NUMBER	FSCM	FIG. NO.	ITEM NO.
G213542	64959	1	14	SMD352618GP2	80063	3	5
MILC6499	81349	1	6	SMD352618GP2	80063	12	5
				SMD352620GP3	80063	12	1
				SMD383873GP3	80063	12	29
SCD543403	80063	11	9	SMD383873GP8	80063	12	28
SMD352593-3	80063	12	13	SMD384145	80063	12	30
SMD352593-5	80063	12	15				
				13-16	81992	10	24
SMD352593-5	80063	3	14	23396-02	82877	5	3
SMD352594-3	80063	12	16				
SMD352594-4	80063	12	17	43M438	03487	10	23
SMD352594-5	80063	12	18	5W140	75618	10	38
SMD352599	80063	12	11	666144-117	12436	10	35
SMD352595BGR3	80063	3	22	666148-224	12436	12	24
SMD352595BGR3	80063	12	19	666148-229	12436	3	24
SMD352595GRP4	80063	12	20	666148-229	12436	12	27
SMD352596BGR3	80063	3	22	666148-233	12436	12	9
SMD352596GRP4	80063	12	23	666148-239	12436	12	12
				666148-266	12436	3	5
SMD352598-3	80063	12	8	666148-266	12436	12	6
SMD352598-5	80063	12	10	698141818	80063	4	1
SMD352599	80063	3	12	78X736N	04314	13	1
SMD352617GRP3	80063	12	4	89G457	08595	13	3

NOTE: SEE PAGE 40 FOR ADDITIONAL LATEST NATIONAL STOCK NUMBER AND PART NUMBER ASSIGNMENTS

ADDITIONAL LATEST NATIONAL STOCK NUMBER ASSIGNMENTS

STOCK NUMBER	FIG. NO.	ITEM NO.
5995-00-134-7159	1	1
5999-00-283-5393	10	16
5999-00-283-5393	15	1
6625-00-669-5019	6	8
6625-00-669-5019	14	9
6250-00-804-3449	4	3
5940-00-937-5237	9	2
5940-00-937-5237	10	17
5940-00-937-5237	17	2

ADDITIONAL LATEST PART NUMBER ASSIGNMENTS

PART NUMBER	FSCM	FIG. NO.	ITEM NO.
CX745AU100FTANDRC435U	80058	11	1
MR36W050ACAAR	81349	6	1
MR36WI50ACW	81349	6	8
MR36W150ACW	81349	14	9
MS15586-2	96906	5	5
MS15586-2	96906	11	7
M641-2-7	81349	10	33
PB08NA01	81349	9	2
PB08NA01	81349	10	17
PB08NA10	81349	17	2
R2A	08108	10	8
SMD352596GRIII	80063	12	22
SMD352593GPIV	80063	12	14
UI87AG	80058	8	1
WC00596D7	81348	1	20
WC00596D7	81348	7	2
WC00596D7	81348	10	3
WC00596D7	81348	15	3
25T8DC115-125	08108	10	27
315K433	01537	10	16
315K433	01537	15	1
591A	02777	4	2
591B	02777	13	2
5KH37KG712X	88422	5	4
78X491	41326	4	4
89G457	08595	4	3

By Order of the Secretary of the Army:

BERNARD W. ROGERS
General, United States Army
Chief of Staff

Official:

PAUL T. SMITH
Major General, United States Army
The Adjutant General

Distribution:

Active Army:

USASA (2)	LBAD (14)
COE (1)	SAAD (30)
TSG (1)	TOAD (14)
USAARENBD (1)	SHAD (3)
DARCOM (1)	Ft Gillem (10)
TRADOC (2)	Sig FLDMS (1)
OS Maj Cmd (4)	USAERDAA (1)
TECOM (2)	USAERDAW (1)
USACC (4)	Units org under fol TOE:
MDW (1)	(1 copy each unit)
Armies (2)	11-15
Corps (2)	11-16
HISA (Ft Monmouth) (88)	11-17
Svc Colleges (1)	11-19
USASIGS (5)	11-85
USAADS (2)	11-86
USAFAS (2)	11-87
USAARMS (2)	11-95
USAIS (2)	11-97
USAES (2)	11-117
USAICS (8)	11-802
MAAG (1)	11-827
USARMIS (1)	11-847
Instls (2) except	11-857
Ft Gordon (10)	11-367
Ft Huachuca (10)	11-500 (AA-AC)
Ft Carson (5)	29-184
Ft Richardson (ECOM Ofc) (2)	29-186

ARNG & USAR: None

For explanation of abbreviations used, see AR 310-50.

RECOMMENDED CHANGES TO EQUIPMENT TECHNICAL PUBLICATIONS



SOMETHING WRONG WITH PUBLICATION

FROM: (PRINT YOUR UNIT'S COMPLETE ADDRESS)

DATE SENT

PUBLICATION NUMBER

PUBLICATION DATE

PUBLICATION TITLE

BE EXACT PIN-POINT WHERE IT IS

PAGE NO.

PARA-GRAPH

FIGURE NO.

TABLE NO.

IN THIS SPACE, TELL WHAT IS WRONG AND WHAT SHOULD BE DONE ABOUT IT.

PRINTED NAME, GRADE OR TITLE AND TELEPHONE NUMBER

SIGN HERE

